

**DATASHEET**

**KLHL3 Rabbit Polyclonal Antibody**

CAT. NO. APA11704

**KEY FEATURES**

Target	KLHL3	Source / Host	Rabbit
Reactivity	Human	Clonality	Polyclonal
Applications	WB, IHC, IF/ICC	Conjugation	Unconjugated
Form / Buffer	Liquid in 0.42% Potassium phosphate, 0.87% Sodium chloride, pH 7.3, 30% glycerol, and 0.01% sodium azide.		Storage at -20°C

**BACKGROUND**

Substrate-specific adapter of a BCR (BTB-CUL3-RBX1) E3 ubiquitin ligase complex that acts as a regulator of ion transport in the distal nephron E3 ubiquitin ligase complex that acts as a regulator of ion transport in the distal nephron . The BCR(KLHL3) complex acts by mediating ubiquitination and degradation of WNK1 and WNK4, two activators of Na-Cl cotransporter SLC12A3/NCC in distal convoluted tubule cells of kidney, thereby regulating NaCl reabsorption . The BCR(KLHL3) complex also mediates ubiquitination and degradation of WNK3 . The BCR(KLHL3) complex also mediates ubiquitination of CLDN8, a tight-junction protein required for paracellular chloride transport in the kidney, leading to its degradation .

**APPLICATION**

To ensure optimal assay performance, AREX recommends conducting reagent titration tailored to each testing system for optimal detection results.

WB	1:500 - 1:1000
IHC	1:50 - 1:200
IF/ICC	1:50 - 1:200

\*Results are sample-specific. Please refer to your local assay conditions and test parameters for reference.

**PRODUCT OVERVIEW**

Description	Rabbit polyclonal antibody to KLHL3
Specificity	Recognizes endogenous levels of KLHL3 protein.
Antibody Type	Primary antibody
Immunogen	KLH-conjugated synthetic peptide encompassing a sequence within the N-term region of human KLHL3. The exact sequence is proprietary.
Purification	The antibody was purified by immunogen affinity chromatography.
Molecular Weight	Predicted: 64 kD; Observed: 75 kD
Form/Buffer	Liquid in 0.42% Potassium phosphate, 0.87% Sodium chloride, pH 7.3, 30% glycerol, and 0.01% sodium azide.
Alternative Names	KIAA1129; Kelch-like protein 3
Gene Symbol	KLHL3
Entrez Gene	26249(Human)
SwissProt	Q9UH77(Human)

\*AREX continuously optimizes our products. Webpage content may not reflect the latest updates. For inquiries, please contact [info@arexbio.com](mailto:info@arexbio.com) or your local distributor.

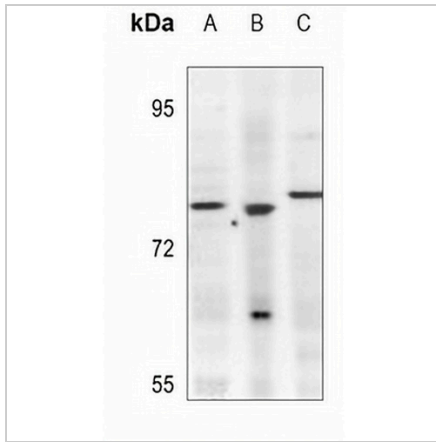
\*Clone Number, Reactivity, Source/Host and Clonality can be found in the product name and Key Features section above.

**DATASHEET**

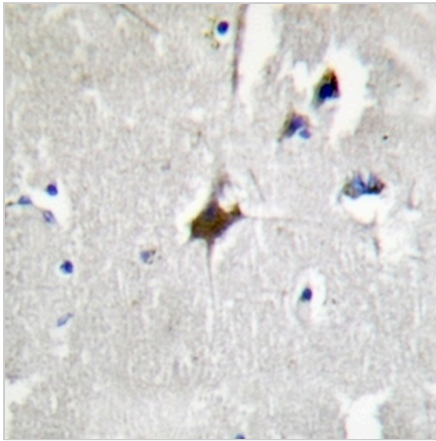
**KLHL3 Rabbit Polyclonal Antibody**

CAT. NO. APA11704

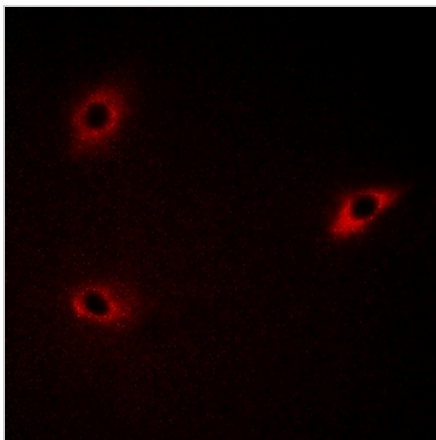
**DATA**



Western blot analysis of KLHL3 expression in U87MG (A), HEK293T (B), HeLa (C) whole cell lysates. (Predicted band size: 64 kD; Observed band size: 75 kD)



Immunohistochemical analysis of KLHL3 staining in human brain formalin fixed paraffin embedded tissue section. The section was pre-treated using heat mediated antigen retrieval with sodium citrate buffer (pH 6.0). The section was then incubated with the antibody at room temperature and detected using an HRP conjugated compact polymer system. DAB was used as the chromogen. The section was then counterstained with haematoxylin and mounted with DPX.



Immunofluorescent analysis of KLHL3 staining in A549 cells. Formalin-fixed cells were permeabilized with 0.1% Triton X-100 in TBS for 5-10 minutes and blocked with 3% BSA-PBS for 30 minutes at room temperature. Cells were probed with the primary antibody in 3% BSA-PBS and incubated overnight at 4 °C in a humidified chamber. Cells were washed with PBST and incubated with a AREX® Fluor 594-conjugated secondary antibody (red) in PBS at room temperature in the dark.

**STORAGE**

Store at 4°C short term. For long term storage, store at -20°C, avoiding freeze/thaw cycles.

**NOTE**

For Research Use Only. Not for diagnostic, therapeutics, prophylactic or in vivo use.