

DATASHEET

GTF3C4 Rabbit Polyclonal Antibody

CAT. NO. APA11705

KEY FEATURES

Target	GTF3C4	Source / Host	Rabbit
Reactivity	Human	Clonality	Polyclonal
Applications	WB, IF/ICC	Conjugation	Unconjugated
Form / Buffer	Liquid in 0.42% Potassium phosphate, 0.87% Sodium chloride, pH 7.3, 30% glycerol, and 0.01% sodium azide.		Storage at -20°C

BACKGROUND

Essential for RNA polymerase III to make a number of small nuclear and cytoplasmic RNAs, including 5S RNA, tRNA, and adenovirus-associated (VA) RNA of both cellular and viral origin RNA of both cellular and viral origin . Has histone acetyltransferase activity (HAT) with unique specificity for free and nucleosomal H3 . May cooperate with GTF3C5 in facilitating the recruitment of TFIIB and RNA polymerase through direct interactions with BRF1, POLR3C and POLR3F . May be localized close to the A box .

APPLICATION

To ensure optimal assay performance, AREX recommends conducting reagent titration tailored to each testing system for optimal detection results.

WB	1:500 - 1:1000
IF/ICC	1:50 - 1:200

*Results are sample-specific. Please refer to your local assay conditions and test parameters for reference.

PRODUCT OVERVIEW

Description	Rabbit polyclonal antibody to GTF3C4
Specificity	Recognizes endogenous levels of GTF3C4 protein.
Antibody Type	Primary antibody
Immunogen	KLH-conjugated synthetic peptide encompassing a sequence within the C-term region of human GTF3C4. The exact sequence is proprietary.
Purification	The antibody was purified by immunogen affinity chromatography.
Molecular Weight	Predicted: 91 kD; Observed: 92 kD
Form/Buffer	Liquid in 0.42% Potassium phosphate, 0.87% Sodium chloride, pH 7.3, 30% glycerol, and 0.01% sodium azide.
Alternative Names	General transcription factor 3C polypeptide 4; TF3C-delta; Transcription factor IIIC 90 kDa subunit; TFIIC 90 kDa subunit; TFIIC90; Transcription factor IIIC subunit delta
Gene Symbol	GTF3C4
Entrez Gene	9329(Human)
SwissProt	Q9UKN8(Human)

*AREX continuously optimizes our products. Webpage content may not reflect the latest updates. For inquiries, please contact info@arexbio.com or your local distributor.

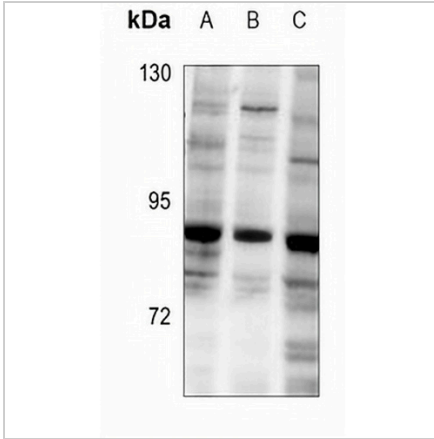
*Clone Number, Reactivity, Source/Host and Clonality can be found in the product name and Key Features section above.

DATASHEET

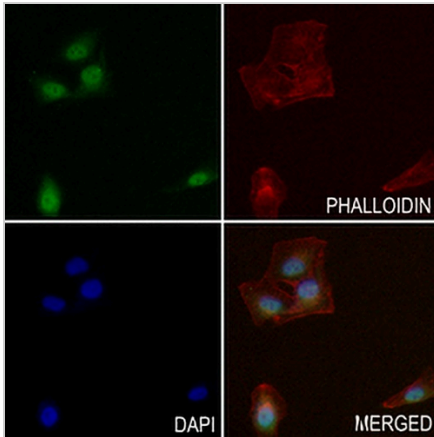
GTF3C4 Rabbit Polyclonal Antibody

CAT. NO. APA11705

DATA



Western blot analysis of GTF3C4 expression in K562 (A), MCF7 (B), HEK293T (C) whole cell lysates. (Predicted band size: 91 kD; Observed band size: 92 kD)



Immunofluorescent analysis of GTF3C4 staining in MG63 cells. Formalin-fixed cells were permeabilized with 0.1% Triton X-100 in TBS for 5-10 minutes and blocked with 3% BSA-PBS for 30 minutes at room temperature. Cells were probed with the primary antibody in 3% BSA-PBS and incubated overnight at 4 °C in a humidified chamber. Cells were washed with PBST and incubated with a AREX® Fluor 488 -conjugated secondary antibody (green) in PBS at room temperature in the dark. Phalloidin - AREX® Fluor 594 was used to stain Actin filaments (red). DAPI was used to stain the cell nuclei (blue).

STORAGE

Store at 4°C short term. For long term storage, store at -20°C, avoiding freeze/thaw cycles.

NOTE

For Research Use Only. Not for diagnostic, therapeutics, prophylactic or in vivo use.