

**DATASHEET**

**PARP2 Rabbit Polyclonal Antibody**

CAT. NO. APA11716

**KEY FEATURES**

Target	PARP2	Source / Host	Rabbit
Reactivity	Human, Rat	Clonality	Polyclonal
Applications	WB	Conjugation	Unconjugated
Form / Buffer	Liquid in 0.42% Potassium phosphate, 0.87% Sodium chloride, pH 7.3, 30% glycerol, and 0.01% sodium azide.		Storage at -20°C

**BACKGROUND**

Poly-ADP-ribosyltransferase that mediates poly-ADP-ribosylation of proteins and plays a key role in DNA repair . Mediates glutamate, aspartate or serine ADP-ribosylation of proteins: the ADP-D-ribosyl group of NAD(+) is transferred to the acceptor carboxyl group of target residues and further ADP-ribosyl groups are transferred to the 2'-position of the terminal adenosine moiety, building up a polymer with an average chain length of 20-30 units . Serine ADP-ribosylation of proteins constitutes the primary form of ADP-ribosylation of proteins in response to DNA damage . Mediates glutamate and aspartate ADP-ribosylation of target proteins in absence of HPF1 .

**APPLICATION**

To ensure optimal assay performance, AREX recommends conducting reagent titration tailored to each testing system for optimal detection results.

WB	1:500 - 1:1000
----	----------------

\*Results are sample-specific. Please refer to your local assay conditions and test parameters for reference.

**PRODUCT OVERVIEW**

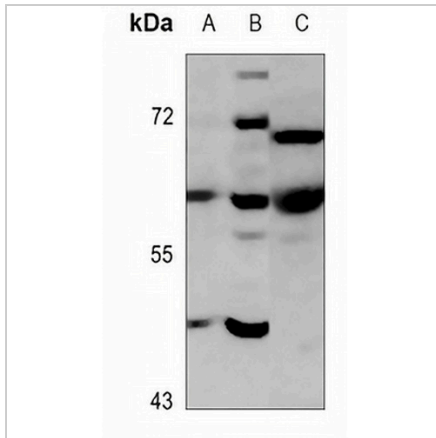
Description	Rabbit polyclonal antibody to PARP2
Specificity	Recognizes endogenous levels of PARP2 protein.
Antibody Type	Primary antibody
Immunogen	KLH-conjugated synthetic peptide encompassing a sequence within the center region of human PARP2. The exact sequence is proprietary.
Purification	The antibody was purified by immunogen affinity chromatography.
Molecular Weight	Predicted: 66 kD; Observed: 66 kD
Form/Buffer	Liquid in 0.42% Potassium phosphate, 0.87% Sodium chloride, pH 7.3, 30% glycerol, and 0.01% sodium azide.
Alternative Names	ADPRT2; ADPRTL2; Poly [ADP-ribose] polymerase 2; PARP-2; hPARP-2; ADP-ribosyltransferase diphtheria toxin-like 2; ARTD2; NAD(+) ADP-ribosyltransferase 2; ADPRT-2; Poly[ADP-ribose] synthase 2; pADPRT-2
Gene Symbol	PARP2
Entrez Gene	10038(Human)
SwissProt	Q9UGN5(Human)

\*AREX continuously optimizes our products. Webpage content may not reflect the latest updates. For inquiries, please contact [info@arexbio.com](mailto:info@arexbio.com) or your local distributor.

\*Clone Number, Reactivity, Source/Host and Clonality can be found in the product name and Key Features section above.

**DATASHEET****PARP2 Rabbit Polyclonal Antibody**

CAT. NO. APA11716

**DATA**

Western blot analysis of PARP2 expression in HEK293T (A), MCF7 (B), rat brain (C) whole cell lysates. (Predicted band size: 66 kD; Observed band size: 66 kD)

**STORAGE**

Store at 4°C short term. For long term storage, store at -20°C, avoiding freeze/thaw cycles.

**NOTE**

For Research Use Only. Not for diagnostic, therapeutics, prophylactic or in vivo use.