

**DATASHEET**

**ARHGAP11A Rabbit Polyclonal Antibody**

CAT. NO. APA11746

**KEY FEATURES**

Target	ARHGAP11A	Source / Host	Rabbit
Reactivity	Human, Mouse, Rat	Clonality	Polyclonal
Applications	WB	Conjugation	Unconjugated
Form / Buffer	Liquid in 0.42% Potassium phosphate, 0.87% Sodium chloride, pH 7.3, 30% glycerol, and 0.01% sodium azide.		Storage at -20°C

**BACKGROUND**

GTPase activator for the Rho-type GTPases by converting them to an inactive GDP-bound state.

**APPLICATION**

To ensure optimal assay performance, AREX recommends conducting reagent titration tailored to each testing system for optimal detection results.

WB	1:500 - 1:1000
----	----------------

\*Results are sample-specific. Please refer to your local assay conditions and test parameters for reference.

**PRODUCT OVERVIEW**

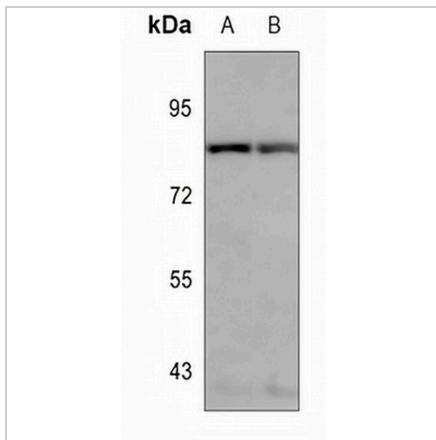
Description	Rabbit polyclonal antibody to ARHGAP11A
Specificity	Recognizes endogenous levels of ARHGAP11A protein.
Antibody Type	Primary antibody
Immunogen	KLH-conjugated synthetic peptide encompassing a sequence within the center region of human ARHGAP11A. The exact sequence is proprietary.
Purification	The antibody was purified by immunogen affinity chromatography.
Molecular Weight	Predicted: 113 kD; Observed: 93 kD
Form/Buffer	Liquid in 0.42% Potassium phosphate, 0.87% Sodium chloride, pH 7.3, 30% glycerol, and 0.01% sodium azide.
Alternative Names	KIAA0013; Rho GTPase-activating protein 11A; Rho-type GTPase-activating protein 11A
Gene Symbol	ARHGAP11A
Entrez Gene	9824(Human); 228482(Mouse)
SwissProt	Q6P4F7(Human); Q80Y19(Mouse)

\*AREX continuously optimizes our products. Webpage content may not reflect the latest updates. For inquiries, please contact [info@arexbio.com](mailto:info@arexbio.com) or your local distributor.

\*Clone Number, Reactivity, Source/Host and Clonality can be found in the product name and Key Features section above.

**DATASHEET****ARHGAP11A Rabbit Polyclonal Antibody**

CAT. NO. APA11746

**DATA**

Western blot analysis of ARHGAP11A expression in mouse muscle (A), rat muscle (B) whole cell lysates. (Predicted band size: 113 kD; Observed band size: 93 kD)

**STORAGE**

Store at 4°C short term. For long term storage, store at -20°C, avoiding freeze/thaw cycles.

**NOTE**

For Research Use Only. Not for diagnostic, therapeutics, prophylactic or in vivo use.