

**DATASHEET**

**Connexin 45 Rabbit Polyclonal Antibody**

CAT. NO. APA11766

**KEY FEATURES**

Target	Connexin 45	Source / Host	Rabbit
Reactivity	Human, Mouse, Rat	Clonality	Polyclonal
Applications	WB, IHC	Conjugation	Unconjugated
Form / Buffer	Liquid in 0.42% Potassium phosphate, 0.87% Sodium chloride, pH 7.3, 30% glycerol, and 0.01% sodium azide.		Storage at -20°C

**BACKGROUND**

Structural component of the gap junction, a specialized intercellular structure consisting of a cluster of closely packed pairs of transmembrane channels, the connexons, that allow passage of small molecules and electrical signals between neighboring cells. Forms homotypic and heterotypic channels gated by transjunctional voltage. Involved in intercellular innate immune signaling. Mediates translocation of 2',3'-cGAMP and 2',5'-oligoadenylates (2-5A) second messengers from virus-infected cells to macrophages and uninfected neighboring cells to propagate and amplify the antiviral immune response second messengers from virus-infected cells to macrophages and uninfected neighboring cells to propagate and amplify the antiviral immune response.

**APPLICATION**

To ensure optimal assay performance, AREX recommends conducting reagent titration tailored to each testing system for optimal detection results.

WB	1:500 - 1:1000
IHC	1:50 - 1:200

\*Results are sample-specific. Please refer to your local assay conditions and test parameters for reference.

**PRODUCT OVERVIEW**

Description	Rabbit polyclonal antibody to Connexin 45
Specificity	Recognizes endogenous levels of Connexin 45 protein.
Antibody Type	Primary antibody
Immunogen	KLH-conjugated synthetic peptide encompassing a sequence within the C-term region of human Connexin 45. The exact sequence is proprietary.
Purification	The antibody was purified by immunogen affinity chromatography.
Molecular Weight	Predicted: 45 kD; Observed: 45 kD
Form/Buffer	Liquid in 0.42% Potassium phosphate, 0.87% Sodium chloride, pH 7.3, 30% glycerol, and 0.01% sodium azide.
Alternative Names	GJA7; Gap junction gamma-1 protein; Connexin-45; Cx45; Gap junction alpha-7 protein
Gene Symbol	GJC1
Entrez Gene	10052(Human); 14615(Mouse); 266706(Rat)
SwissProt	P36383(Human); P28229(Mouse); A4GG66(Rat)

\*AREX continuously optimizes our products. Webpage content may not reflect the latest updates. For inquiries, please contact [info@arexbio.com](mailto:info@arexbio.com) or your local distributor.

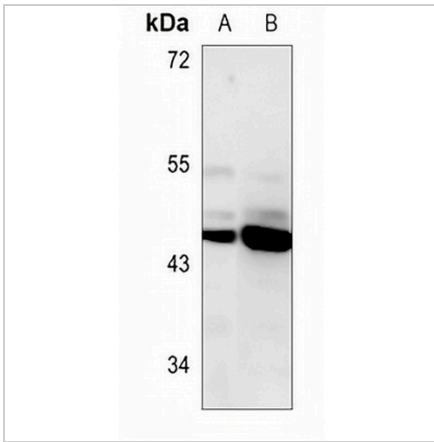
\*Clone Number, Reactivity, Source/Host and Clonality can be found in the product name and Key Features section above.

**DATASHEET**

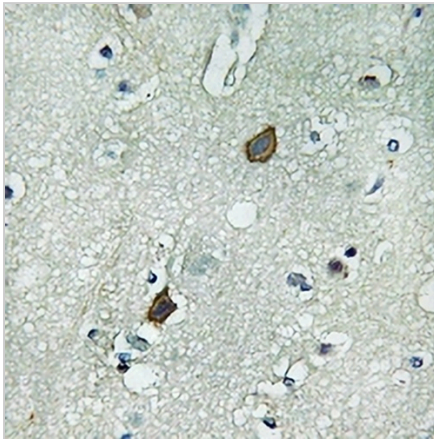
**Connexin 45 Rabbit Polyclonal Antibody**

CAT. NO. APA11766

**DATA**



Western blot analysis of Connexin 45 expression in mouse liver (A), rat liver (B) whole cell lysates. (Predicted band size: 45 kD; Observed band size: 45 kD)



Immunohistochemical analysis of Connexin 45 staining in human brain formalin fixed paraffin embedded tissue section. The section was pre-treated using heat mediated antigen retrieval with sodium citrate buffer (pH 6.0). The section was then incubated with the antibody at room temperature and detected using an HRP conjugated compact polymer system. DAB was used as the chromogen. The section was then counterstained with haematoxylin and mounted with DPX.

**STORAGE**

Store at 4°C short term. For long term storage, store at -20°C, avoiding freeze/thaw cycles.

**NOTE**

For Research Use Only. Not for diagnostic, therapeutics, prophylactic or in vivo use.