

DATASHEET

CYLD Rabbit Polyclonal Antibody

CAT. NO. APA11768

KEY FEATURES

Target	CYLD	Source / Host	Rabbit
Reactivity	Human	Clonality	Polyclonal
Applications	WB	Conjugation	Unconjugated
Form / Buffer	Liquid in 0.42% Potassium phosphate, 0.87% Sodium chloride, pH 7.3, 30% glycerol, and 0.01% sodium azide.		Storage at-20°C

BACKGROUND

Deubiquitinase that specifically cleaves 'Lys-63'- and linear 'Met-1'-linked polyubiquitin chains and is involved in NF-kappa-B activation and TNF-induced necroptosis . Negatively regulates NF-kappa-B activation by deubiquitinating upstream signaling factors . Contributes to the regulation of cell survival, proliferation and differentiation via its effects on NF-kappa-B activation . Negative regulator of Wnt signaling . Inhibits HDAC6 and thereby promotes acetylation of alpha-tubulin and stabilization of microtubules . Plays a role in the regulation of microtubule dynamics, and thereby contributes to the regulation of cell proliferation, cell polarization, cell migration, and angiogenesis . Required for normal cell cycle progress and normal cytokinesis .

APPLICATION

To ensure optimal assay performance, AREX recommends conducting reagent titration tailored to each testing system for optimal detection results.

WB	1:500 - 1:1000
----	----------------

*Results are sample-specific. Please refer to your local assay conditions and test parameters for reference.

PRODUCT OVERVIEW

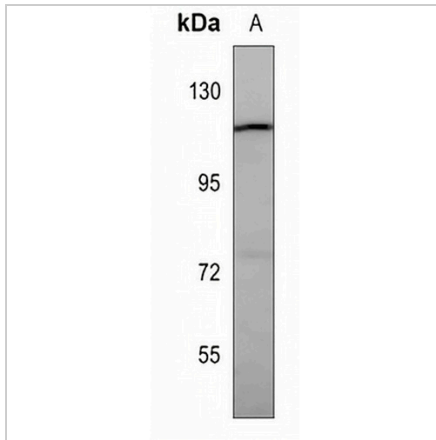
Description	Rabbit polyclonal antibody to CYLD
Specificity	Recognizes endogenous levels of CYLD protein.
Antibody Type	Primary antibody
Immunogen	KLH-conjugated synthetic peptide encompassing a sequence within the center region of human CYLD. The exact sequence is proprietary.
Purification	The antibody was purified by immunogen affinity chromatography.
Molecular Weight	Predicted: 107 kD; Observed: 120 kD
Form/Buffer	Liquid in 0.42% Potassium phosphate, 0.87% Sodium chloride, pH 7.3, 30% glycerol, and 0.01% sodium azide.
Alternative Names	CYLD1; KIAA0849; Ubiquitin carboxyl-terminal hydrolase CYLD; Deubiquitinating enzyme CYLD; Ubiquitin thioesterase CYLD; Ubiquitin-specific-processing protease CYLD
Gene Symbol	CYLD
Entrez Gene	1540(Human)
SwissProt	Q9NQC7(Human)

*AREX continuously optimizes our products. Webpage content may not reflect the latest updates. For inquiries, please contact info@arexbio.com or your local distributor.

*Clone Number, Reactivity, Source/Host and Clonality can be found in the product name and Key Features section above.

DATASHEET**CYLD Rabbit Polyclonal Antibody**

CAT. NO. APA11768

DATA

Western blot analysis of CYLD expression in SGC7901 (A) whole cell lysates. (Predicted band size: 107 kD; Observed band size: 120 kD)

STORAGE

Store at 4°C short term. For long term storage, store at -20°C, avoiding freeze/thaw cycles.

NOTE

For Research Use Only. Not for diagnostic, therapeutics, prophylactic or in vivo use.