

**DATASHEET**

**RIPK3 (Phospho-S227) Rabbit Polyclonal Antibody**

CAT. NO. APA11776

**KEY FEATURES**

Target	RIPK3 (Phospho-S227)	Source / Host	Rabbit
Reactivity	Human	Clonality	Polyclonal
Applications	WB	Conjugation	Unconjugated
Form / Buffer	Liquid in 0.42% Potassium phosphate, 0.87% Sodium chloride, pH 7.3, 30% glycerol, and 0.01% sodium azide.		Storage at -20°C

**BACKGROUND**

Serine/threonine-protein kinase that activates necroptosis and apoptosis, two parallel forms of cell death . Necroptosis, a programmed cell death process in response to death-inducing TNF family members, is triggered by RIPK3 following activation by ZBP1 . Activated RIPK3 forms a necrosis-inducing complex and mediates phosphorylation of MLKL, promoting MLKL localization to the plasma membrane and execution of programmed necrosis characterized by calcium influx and plasma membrane damage .

**APPLICATION**

To ensure optimal assay performance, AREX recommends conducting reagent titration tailored to each testing system for optimal detection results.

WB	1:500 - 1:1000
----	----------------

\*Results are sample-specific. Please refer to your local assay conditions and test parameters for reference.

**PRODUCT OVERVIEW**

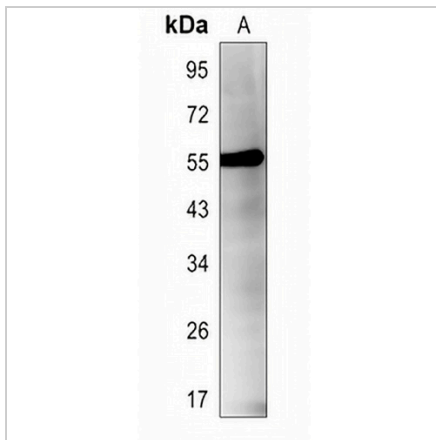
Description	Rabbit polyclonal antibody to RIPK3 (Phospho-S227)
Specificity	Recognizes endogenous levels of RIPK3 protein only when phosphorylated at S227.
Antibody Type	Primary antibody
Immunogen	KLH-conjugated synthetic phosphopeptide corresponding to residues surrounding S227 of human RIPK3 protein. The exact sequence is proprietary.
Purification	The antibody was purified by immunogen affinity chromatography.
Molecular Weight	Predicted: 56 kD; Observed: 56 kD
Form/Buffer	Liquid in 0.42% Potassium phosphate, 0.87% Sodium chloride, pH 7.3, 30% glycerol, and 0.01% sodium azide.
Alternative Names	RIP3; Receptor-interacting serine/threonine-protein kinase 3; RIP-like protein kinase 3; Receptor-interacting protein 3; RIP-3
Gene Symbol	RIPK3
Entrez Gene	11035(Human)
SwissProt	Q9Y572(Human)

\*AREX continuously optimizes our products. Webpage content may not reflect the latest updates. For inquiries, please contact [info@arexbio.com](mailto:info@arexbio.com) or your local distributor.

\*Clone Number, Reactivity, Source/Host and Clonality can be found in the product name and Key Features section above.

**DATASHEET****RIPK3 (Phospho-S227) Rabbit Polyclonal Antibody**

CAT. NO. APA11776

**DATA**

Western blot analysis of RIPK3 (Phospho-S227) expression in HEK293T (A) whole cell lysates. (Predicted band size: 56 kD; Observed band size: 56 kD)

**STORAGE**

Store at 4°C short term. For long term storage, store at -20°C, avoiding freeze/thaw cycles.

**NOTE**

For Research Use Only. Not for diagnostic, therapeutics, prophylactic or in vivo use.