

DATASHEET

CD85a/h/i Rabbit Polyclonal Antibody

CAT. NO. APA11787

KEY FEATURES

Target	CD85a/h/i	Source / Host	Rabbit
Reactivity	Human	Clonality	Polyclonal
Applications	WB	Conjugation	Unconjugated
Form / Buffer	Liquid in 0.42% Potassium phosphate, 0.87% Sodium chloride, pH 7.3, 30% glycerol, and 0.01% sodium azide.		Storage at-20°C

BACKGROUND

May act as receptor for class I MHC antigens.

APPLICATION

To ensure optimal assay performance, AREX recommends conducting reagent titration tailored to each testing system for optimal detection results.

WB	1:500 - 1:1000
----	----------------

*Results are sample-specific. Please refer to your local assay conditions and test parameters for reference.

PRODUCT OVERVIEW

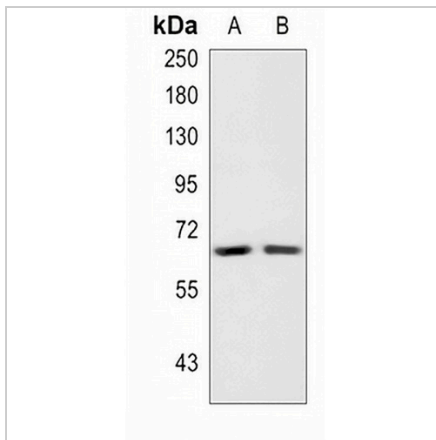
Description	Rabbit polyclonal antibody to CD85a/h/i
Specificity	Recognizes endogenous levels of CD85a/h/i protein
Antibody Type	Primary antibody
Immunogen	KLH-conjugated synthetic peptide encompassing a sequence within the center region of human CD85a/h/i. The exact sequence is proprietary.
Purification	The antibody was purified by immunogen affinity chromatography.
Molecular Weight	Predicted: 53, 52, 69 kD; Observed: 69 kD
Form/Buffer	Liquid in 0.42% Potassium phosphate, 0.87% Sodium chloride, pH 7.3, 30% glycerol, and 0.01% sodium azide.
Alternative Names	LILRA1; LIR6; Leukocyte immunoglobulin-like receptor subfamily A member 1; CD85 antigen-like family member I; Leukocyte immunoglobulin-like receptor 6; LIR-6; CD85i; LILRA2; ILT1; LIR7; Leukocyte immunoglobulin-like receptor subfamily A member 2; CD85 antigen-like family member H; Immunoglobulin-like transcript 1; ILT-1; Leukocyte immunoglobulin-like receptor 7; LIR-7; CD85h; LILRA6; ILT8; Leukocyte immunoglobulin-like receptor subfamily A member 6; Immunoglobulin-like transcript 8; ILT-8; Leukocyte Ig-like receptor; LILRB3; ILT5; LIR3; Leukocyte immunoglobulin-like receptor subfamily B member 3; LIR-3; Leukocyte immunoglobulin-like receptor 3; CD85 antigen-like family member A; Immunoglobulin-like transcript 5; ILT-5; Monocyte inhibitory receptor HL9; CD85a
Gene Symbol	LILRA1; LILRA2; LILRA6; LILRB3
Entrez Gene	11024; 11027; 79168; 11025(Human)
SwissProt	O75019; Q8N149; Q6PI73; O75022(Human)

*AREX continuously optimizes our products. Webpage content may not reflect the latest updates. For inquiries, please contact info@arexbio.com or your local distributor.

*Clone Number, Reactivity, Source/Host and Clonality can be found in the product name and Key Features section above.

DATASHEET**CD85a/h/i Rabbit Polyclonal Antibody**

CAT. NO. APA11787

DATA

Western blot analysis of CD85a/h/i expression in Myla2059 (A), SGC7901 (B) whole cell lysates. (Predicted band size: 53, 52, 69 kD; Observed band size: 69 kD)

STORAGE

Store at 4°C short term. For long term storage, store at -20°C, avoiding freeze/thaw cycles.

NOTE

For Research Use Only. Not for diagnostic, therapeutics, prophylactic or in vivo use.