

**DATASHEET**

**TRPM2 Rabbit Polyclonal Antibody**

CAT. NO. APA11797

**KEY FEATURES**

Target	TRPM2	Source / Host	Rabbit
Reactivity	Human, Mouse, Rat	Clonality	Polyclonal
Applications	WB	Conjugation	Unconjugated
Form / Buffer	Liquid in 0.42% Potassium phosphate, 0.87% Sodium chloride, pH 7.3, 30% glycerol, and 0.01% sodium azide.		Storage at -20°C

**BACKGROUND**

Nonselective, voltage-independent cation channel that mediates Na(+) and Ca(2+) influx, leading to increased cytoplasmic Ca(2+) levels and Ca(2+) influx, leading to increased cytoplasmic Ca(2+) levels . Functions as a ligand-gated ion channel, gated by intracellular adenosine diphosphate ribose (ADP-ribose), Ca(2+), warm temperature, and oxidative stress . The precise physiological activators are under debate; the true, physiological activators may be ADP-ribose and ADP-ribose-2'-phosphate . Binding of ADP-ribose to the cytoplasmic Nudix domain causes a conformation change; the channel is primed but still requires Ca(2+) binding to trigger channel opening . Extracellular Ca(2+) passes through the channel and increases channel activity .

**APPLICATION**

To ensure optimal assay performance, AREX recommends conducting reagent titration tailored to each testing system for optimal detection results.

WB	1:500 - 1:1000
----	----------------

\*Results are sample-specific. Please refer to your local assay conditions and test parameters for reference.

**PRODUCT OVERVIEW**

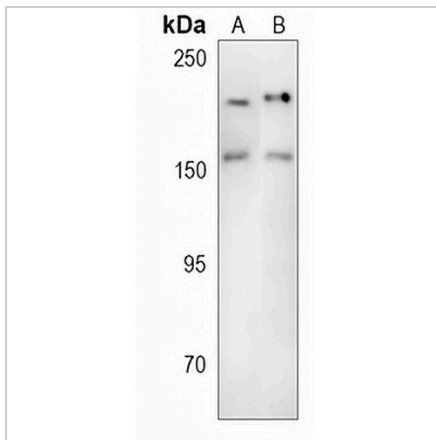
Description	Rabbit polyclonal antibody to TRPM2
Specificity	Recognizes endogenous levels of TRPM2 protein
Antibody Type	Primary antibody
Immunogen	KLH-conjugated synthetic peptide encompassing a sequence within the center region of human TRPM2. The exact sequence is proprietary.
Purification	The antibody was purified by immunogen affinity chromatography.
Molecular Weight	Predicted: 171, 165, 95 kD; Observed: 171 kD
Form/Buffer	Liquid in 0.42% Potassium phosphate, 0.87% Sodium chloride, pH 7.3, 30% glycerol, and 0.01% sodium azide.
Alternative Names	REG1; KNP3; LTRPC2; TRPC7; Transient receptor potential cation channel subfamily M member 2; Estrogen-responsive element-associated gene 1 protein; Long transient receptor potential channel 2; LTrpC-2; LTrpC2; Transient receptor potential channel 7; TrpC7
Gene Symbol	TRPM2
Entrez Gene	7226(Human)
SwissProt	O94759(Human); Q91YD4(Mouse)

\*AREX continuously optimizes our products. Webpage content may not reflect the latest updates. For inquiries, please contact [info@arexbio.com](mailto:info@arexbio.com) or your local distributor.

\*Clone Number, Reactivity, Source/Host and Clonality can be found in the product name and Key Features section above.

**DATASHEET****TRPM2 Rabbit Polyclonal Antibody**

CAT. NO. APA11797

**DATA**

Western blot analysis of TRPM2 expression in mouse brain (A), rat brain (B) whole cell lysates. (Predicted band size: 171, 165, 95 kD; Observed band size: 171 kD)

**STORAGE**

Store at 4°C short term. For long term storage, store at -20°C, avoiding freeze/thaw cycles.

**NOTE**

For Research Use Only. Not for diagnostic, therapeutics, prophylactic or in vivo use.