

DATASHEET

MCOLN1 Rabbit Polyclonal Antibody

CAT. NO. APA11799

KEY FEATURES

Target	MCOLN1	Source / Host	Rabbit
Reactivity	Human	Clonality	Polyclonal
Applications	WB	Conjugation	Unconjugated
Form / Buffer	Liquid in 0.42% Potassium phosphate, 0.87% Sodium chloride, pH 7.3, 30% glycerol, and 0.01% sodium azide.		Storage at -20°C

BACKGROUND

Nonselective cation channel probably playing a role in the regulation of membrane trafficking events and of metal homeostasis . Acts as a Ca(2+)-permeable cation channel with inwardly rectifying activity . Proposed to play a major role in Ca(2+) release from late endosome and lysosome vesicles to the cytoplasm, which is important for many lysosome-dependent cellular events, including the fusion and trafficking of these organelles, exocytosis and autophagy . Required for efficient uptake of large particles in macrophages in which Ca(2+) release from the lysosomes triggers lysosomal exocytosis. May also play a role in phagosome-lysosome fusion . Involved in lactosylceramide trafficking indicative for a role in the regulation of late endocytic membrane fusion/fission events .

APPLICATION

To ensure optimal assay performance, AREX recommends conducting reagent titration tailored to each testing system for optimal detection results.

WB	1:500 - 1:1000
----	----------------

*Results are sample-specific. Please refer to your local assay conditions and test parameters for reference.

PRODUCT OVERVIEW

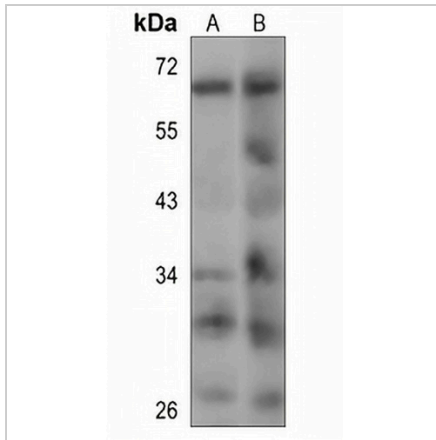
Description	Rabbit polyclonal antibody to MCOLN1
Specificity	Recognizes endogenous levels of MCOLN1 protein
Antibody Type	Primary antibody
Immunogen	KLH-conjugated synthetic peptide encompassing a sequence within the center region of human MCOLN1. The exact sequence is proprietary.
Purification	The antibody was purified by immunogen affinity chromatography.
Molecular Weight	Predicted: 65 kD; Observed: 65 kD
Form/Buffer	Liquid in 0.42% Potassium phosphate, 0.87% Sodium chloride, pH 7.3, 30% glycerol, and 0.01% sodium azide.
Alternative Names	ML4; Mucolipin-1; MG-2; Mucolipidin
Gene Symbol	MCOLN1
Entrez Gene	57192(Human)
SwissProt	Q9GZU1(Human)

*AREX continuously optimizes our products. Webpage content may not reflect the latest updates. For inquiries, please contact info@arexbio.com or your local distributor.

*Clone Number, Reactivity, Source/Host and Clonality can be found in the product name and Key Features section above.

DATASHEET**MCOLN1 Rabbit Polyclonal Antibody**

CAT. NO. APA11799

DATA

Western blot analysis of MCOLN1 expression in HEK293 (A), Jurkat (B) whole cell lysates.
(Predicted band size: 65 kD; Observed band size: 65 kD)

STORAGE

Store at 4°C short term. For long term storage, store at -20°C, avoiding freeze/thaw cycles.

NOTE

For Research Use Only. Not for diagnostic, therapeutics, prophylactic or in vivo use.