

DATASHEET

Rabphilin 3A (Phospho-S237) Rabbit Polyclonal Antibody

CAT. NO. APA11805

KEY FEATURES

| | | | |
|---------------|---|---------------|--------------|
| Target | Rabphilin 3A (Phospho-S237) | Source / Host | Rabbit |
| Reactivity | Human, Mouse, Rat | Clonality | Polyclonal |
| Applications | WB, IHC, IF/ICC | Conjugation | Unconjugated |
| Form / Buffer | Liquid in 0.42% Potassium phosphate, 0.87% Sodium chloride, pH 7.3, 30% glycerol, and 0.01% sodium azide. | Storage | at-20°C |

BACKGROUND

Plays an essential role in docking and fusion steps of regulated exocytosis . At the presynaptic level, RPH3A is recruited by RAB3A to the synaptic vesicle membrane in a GTP-dependent manner where it modulates synaptic vesicle trafficking and calcium-triggered neurotransmitter release . In the post-synaptic compartment, forms a ternary complex with GRIN2A and DLG4 and regulates NMDA receptor stability. Also plays a role in the exocytosis of arginine vasopressin hormone .

APPLICATION

To ensure optimal assay performance, AREX recommends conducting reagent titration tailored to each testing system for optimal detection results.

| | |
|--------|----------------|
| WB | 1:500 - 1:1000 |
| IHC | 1:50 - 1:200 |
| IF/ICC | 1:50 - 1:200 |

*Results are sample-specific. Please refer to your local assay conditions and test parameters for reference.

PRODUCT OVERVIEW

| | |
|-------------------|--|
| Description | Rabbit polyclonal antibody to Rabphilin 3A (Phospho-S237) |
| Specificity | Recognizes endogenous levels of Rabphilin 3A protein only when phosphorylated at S237 |
| Antibody Type | Primary antibody |
| Immunogen | KLH-conjugated synthetic phosphopeptide corresponding to residues surrounding S237 of human Rabphilin 3A. The exact sequence is proprietary. |
| Purification | The antibody was purified by immunogen affinity chromatography. |
| Molecular Weight | Predicted: 76 kD; Observed: 76 kD |
| Form/Buffer | Liquid in 0.42% Potassium phosphate, 0.87% Sodium chloride, pH 7.3, 30% glycerol, and 0.01% sodium azide. |
| Alternative Names | KIAA0985; Rabphilin-3A; Exophilin-1 |
| Gene Symbol | RPH3A |
| Entrez Gene | 22895(Human); 19894(Mouse); 171039(Rat) |
| SwissProt | Q9Y2J0(Human); P47708(Mouse); P47709(Rat) |

*AREX continuously optimizes our products. Webpage content may not reflect the latest updates. For inquiries, please contact info@arexbio.com or your local distributor.

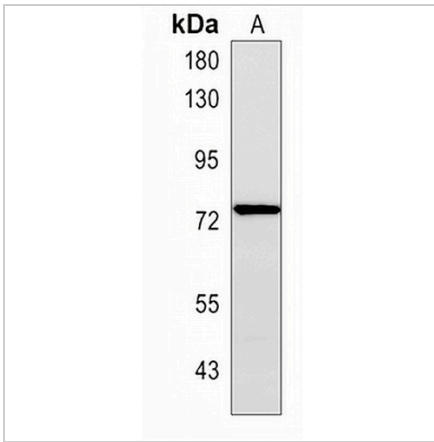
*Clone Number, Reactivity, Source/Host and Clonality can be found in the product name and Key Features section above.

DATASHEET

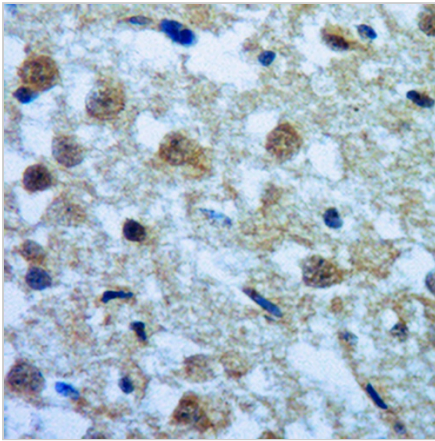
Rabphilin 3A (Phospho-S237) Rabbit Polyclonal Antibody

CAT. NO. APA11805

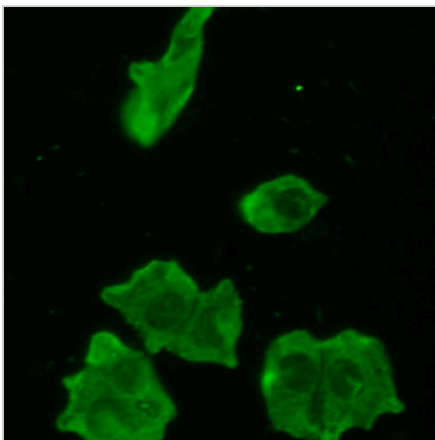
DATA



Western blot analysis of Rabphilin 3A (Phospho-S237) expression in rat brain (A) whole cell lysates. (Predicted band size: 76 kD; Observed band size: 76 kD)



Immunohistochemical analysis of Rabphilin 3A (Phospho-S237) staining in human brain formalin fixed paraffin embedded tissue section. The section was pre-treated using heat mediated antigen retrieval with sodium citrate buffer (pH 6.0). The section was then incubated with the antibody at room temperature and detected using an HRP conjugated compact polymer system. DAB was used as the chromogen. The section was then counterstained with haematoxylin and mounted with DPX.



Immunofluorescent analysis of Rabphilin 3A (Phospho-S237) staining in HeLa cells. Formalin-fixed cells were permeabilized with 0.1% Triton X-100 in TBS for 5-10 minutes and blocked with 3% BSA-PBS for 30 minutes at room temperature. Cells were probed with the primary antibody in 3% BSA-PBS and incubated overnight at 4 °C in a humidified chamber. Cells were washed with PBST and incubated with a AREX® Fluor 488 - conjugated secondary antibody (green) in PBS at room temperature in the dark.

STORAGE

Store at 4°C short term. For long term storage, store at -20°C, avoiding freeze/thaw cycles.

NOTE

For Research Use Only. Not for diagnostic, therapeutics, prophylactic or in vivo use.