

DATASHEET

CD88 (Phospho-S338) Rabbit Polyclonal Antibody

CAT. NO. APA11806

KEY FEATURES

Target	CD88 (Phospho-S338)	Source / Host	Rabbit
Reactivity	Human, Mouse, Rat	Clonality	Polyclonal
Applications	WB	Conjugation	Unconjugated
Form / Buffer	Liquid in 0.42% Potassium phosphate, 0.87% Sodium chloride, pH 7.3, 30% glycerol, and 0.01% sodium azide.	Storage	at-20°C

BACKGROUND

Receptor for the chemotactic and inflammatory peptide anaphylatoxin C5a, stimulating chemotaxis, granule enzyme release, intracellular calcium release and superoxide anion production . Ligand binding causes a conformation change that triggers signaling via guanine nucleotide-binding proteins (G proteins) and modulates the activity of downstream effectors, such as adenylate cyclase . C5AR1 is coupled to G(i)/G(o) (GNAI1 or GNAO1) G alpha proteins and mediates inhibition of adenylate cyclase . The ligand interacts with at least two sites on the receptor: a high-affinity site on the extracellular N-terminus, and a second site in the transmembrane region which activates downstream signaling events .

APPLICATION

To ensure optimal assay performance, AREX recommends conducting reagent titration tailored to each testing system for optimal detection results.

WB	1:500 - 1:1000
----	----------------

*Results are sample-specific. Please refer to your local assay conditions and test parameters for reference.

PRODUCT OVERVIEW

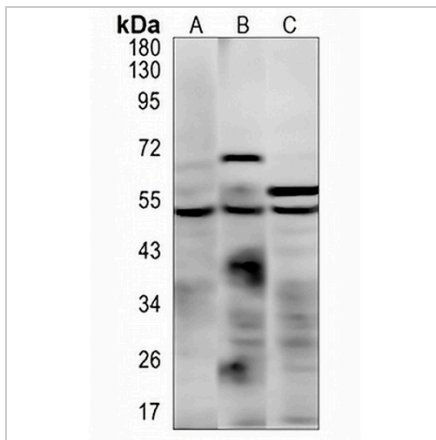
Description	Rabbit polyclonal antibody to CD88 (Phospho-S338)
Specificity	Recognizes endogenous levels of CD88 protein only when phosphorylated at S338
Antibody Type	Primary antibody
Immunogen	KLH-conjugated synthetic phosphopeptide corresponding to residues surrounding S338 of human CD88. The exact sequence is proprietary.
Purification	The antibody was purified by immunogen affinity chromatography.
Molecular Weight	Predicted: 39 kD; Observed: 49 kD
Form/Buffer	Liquid in 0.42% Potassium phosphate, 0.87% Sodium chloride, pH 7.3, 30% glycerol, and 0.01% sodium azide.
Alternative Names	C5AR; C5R1; C5a anaphylatoxin chemotactic receptor 1; C5a anaphylatoxin chemotactic receptor; C5a-R; C5aR; CD88
Gene Symbol	C5AR1
Entrez Gene	728(Human); 113959(Rat)
SwissProt	P21730(Human); P30993(Mouse); P97520(Rat)

*AREX continuously optimizes our products. Webpage content may not reflect the latest updates. For inquiries, please contact info@arexbio.com or your local distributor.

*Clone Number, Reactivity, Source/Host and Clonality can be found in the product name and Key Features section above.

DATASHEET**CD88 (Phospho-S338) Rabbit Polyclonal Antibody**

CAT. NO. APA11806

DATA

Western blot analysis of CD88 (Phospho-S338) expression in HepG2 (A), mouse kidney (B), rat kidney (C) whole cell lysates. (Predicted band size: 39 kD; Observed band size: 49 kD)

STORAGE

Store at 4°C short term. For long term storage, store at -20°C, avoiding freeze/thaw cycles.

NOTE

For Research Use Only. Not for diagnostic, therapeutics, prophylactic or in vivo use.