

DATASHEET

Presenilin 1 (Phospho-S353) Rabbit Polyclonal Antibody

CAT. NO. APA11811

KEY FEATURES

Target	Presenilin 1 (Phospho-S353)	Source / Host	Rabbit
Reactivity	Human	Clonality	Polyclonal
Applications	WB	Conjugation	Unconjugated
Form / Buffer	Liquid in 0.42% Potassium phosphate, 0.87% Sodium chloride, pH 7.3, 30% glycerol, and 0.01% sodium azide.		Storage at-20°C

BACKGROUND

Catalytic subunit of the gamma-secretase complex, an endoprotease complex that catalyzes the intramembrane cleavage of integral membrane proteins such as Notch receptors and APP (amyloid-beta precursor protein) . Requires the presence of the other members of the gamma-secretase complex for protease activity . Plays a role in Notch and Wnt signaling cascades and regulation of downstream processes via its role in processing key regulatory proteins, and by regulating cytosolic CTNNB1 levels . Stimulates cell-cell adhesion via its interaction with CDH1; this stabilizes the complexes between CDH1 (E-cadherin) and its interaction partners CTNNB1 (beta-catenin), CTNND1 and JUP (gamma-catenin) . Under conditions of apoptosis or calcium influx, cleaves CDH1 .

APPLICATION

To ensure optimal assay performance, AREX recommends conducting reagent titration tailored to each testing system for optimal detection results.

WB	1:500 - 1:1000
----	----------------

*Results are sample-specific. Please refer to your local assay conditions and test parameters for reference.

PRODUCT OVERVIEW

Description	Rabbit polyclonal antibody to Presenilin 1 (Phospho-S353)
Specificity	Recognizes endogenous levels of Presenilin 1 protein only when phosphorylated at S353
Antibody Type	Primary antibody
Immunogen	KLH-conjugated synthetic phosphopeptide corresponding to residues surrounding S353 of human Presenilin 1. The exact sequence is proprietary.
Purification	The antibody was purified by immunogen affinity chromatography.
Molecular Weight	Predicted: 52 kD; Observed: 52, 22 kD
Form/Buffer	Liquid in 0.42% Potassium phosphate, 0.87% Sodium chloride, pH 7.3, 30% glycerol, and 0.01% sodium azide.
Alternative Names	AD3; PS1; PSNL1; Presenilin-1; PS-1; Protein S182
Gene Symbol	PSEN1
Entrez Gene	5663(Human)
SwissProt	P49768(Human)

*AREX continuously optimizes our products. Webpage content may not reflect the latest updates. For inquiries, please contact info@arexbio.com or your local distributor.

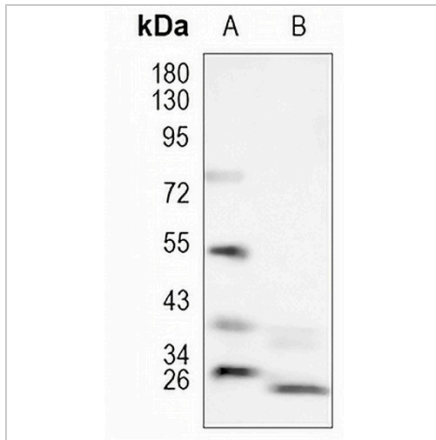
*Clone Number, Reactivity, Source/Host and Clonality can be found in the product name and Key Features section above.

DATASHEET

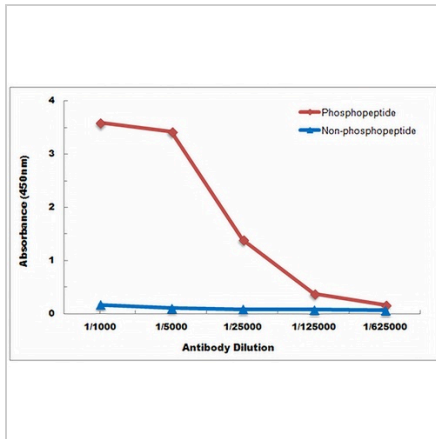
Presenilin 1 (Phospho-S353) Rabbit Polyclonal Antibody

CAT. NO. APA11811

DATA



Western blot analysis of Presenilin 1 (Phospho-S353) expression in A549 (A), THP1 (B) whole cell lysates. (Predicted band size: 52 kD; Observed band size: 52, 22 kD)



Direct ELISA antibody dose-response curve using Anti-Presenilin 1 (Phospho-S353) Antibody. Antigen (Phosphopeptide and non-phosphopeptide) concentration is 5 ug/ml. Goat Anti-Rabbit IgG (H&L) - HRP was used as the secondary antibody, and signal was developed by TMB substrate.

STORAGE

Store at 4°C short term. For long term storage, store at -20°C, avoiding freeze/thaw cycles.

NOTE

For Research Use Only. Not for diagnostic, therapeutics, prophylactic or in vivo use.