

## DATASHEET

# Zyxin (Phospho-S142) Rabbit Polyclonal Antibody

CAT. NO. APA11813

### KEY FEATURES

|               |   |               |              |
|---------------|---|---------------|--------------|
| Target        | Zyxin (Phospho-S142)  | Source / Host | Rabbit       |
| Reactivity    | Human, Mouse, Rat   | Clonality     | Polyclonal   |
| Applications  | WB  | Conjugation   | Unconjugated |
| Form / Buffer | Liquid in 0.42% Potassium phosphate, 0.87% Sodium chloride, pH 7.3, 30% glycerol, and 0.01% sodium azide. | Storage       | at-20°C      |

### BACKGROUND

Adhesion plaque protein. Binds alpha-actinin and the CRP protein. Important for targeting TES and ENA/VASP family members to focal adhesions and for the formation of actin-rich structures. May be a component of a signal transduction pathway that mediates adhesion-stimulated changes in gene expression .

### APPLICATION

To ensure optimal assay performance, AREX recommends conducting reagent titration tailored to each testing system for optimal detection results.

|    |                |
|----|----------------|
| WB | 1:500 - 1:1000 |
|----|----------------|

\*Results are sample-specific. Please refer to your local assay conditions and test parameters for reference.

### PRODUCT OVERVIEW

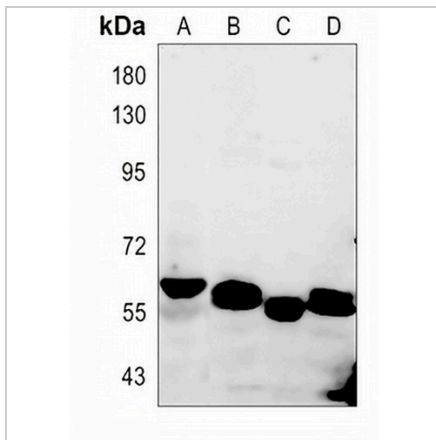
|                   |   |
|-------------------|---|
| Description       | Rabbit polyclonal antibody to Zyxin (Phospho-S142)  |
| Specificity       | Recognizes endogenous levels of Zyxin protein only when phosphorylated at S142  |
| Antibody Type     | Primary antibody  |
| Immunogen         | KLH-conjugated synthetic phosphopeptide corresponding to residues surrounding S142 of human Zyxin. The exact sequence is proprietary. |
| Purification      | The antibody was purified by immunogen affinity chromatography.   |
| Molecular Weight  | Predicted: 61 kD; Observed: 61 kD   |
| Form/Buffer       | Liquid in 0.42% Potassium phosphate, 0.87% Sodium chloride, pH 7.3, 30% glycerol, and 0.01% sodium azide.                             |
| Alternative Names | Zyxin; Zyxin-2  |
| Gene Symbol       | ZYX   |
| Entrez Gene       | 7791(Human); 22793(Mouse)   |
| SwissProt         | Q15942(Human); Q62523(Mouse)  |

\*AREX continuously optimizes our products. Webpage content may not reflect the latest updates. For inquiries, please contact [info@arexbio.com](mailto:info@arexbio.com) or your local distributor.

\*Clone Number, Reactivity, Source/Host and Clonality can be found in the product name and Key Features section above.

**DATASHEET****Zyxin (Phospho-S142) Rabbit Polyclonal Antibody**

CAT. NO. APA11813

**DATA**

Western blot analysis of Zyxin (Phospho-S142) expression in HuT78 (A), mouse muscle (B), rat lung (C), rat muscle (D) whole cell lysates. (Predicted band size: 61 kD; Observed band size: 61 kD)

**STORAGE**

Store at 4°C short term. For long term storage, store at -20°C, avoiding freeze/thaw cycles.

**NOTE**

For Research Use Only. Not for diagnostic, therapeutics, prophylactic or in vivo use.