

DATASHEET

Vinculin (Phospho-Y1133/1065) Rabbit Polyclonal Antibody

CAT. NO. APA11814

KEY FEATURES

Target	Vinculin (Phospho-Y1133/1065)	Source / Host	Rabbit
Reactivity	Human, Mouse, Rat	Clonality	Polyclonal
Applications	WB	Conjugation	Unconjugated
Form / Buffer	Liquid in 0.42% Potassium phosphate, 0.87% Sodium chloride, pH 7.3, 30% glycerol, and 0.01% sodium azide.		Storage at -20°C

BACKGROUND

Actin filament (F-actin)-binding protein involved in cell-matrix adhesion and cell-cell adhesion. Regulates cell-surface E-cadherin expression and potentiates mechanosensing by the E-cadherin complex. May also play important roles in cell morphology and locomotion.

APPLICATION

To ensure optimal assay performance, AREX recommends conducting reagent titration tailored to each testing system for optimal detection results.

WB	1:500 - 1:1000
----	----------------

*Results are sample-specific. Please refer to your local assay conditions and test parameters for reference.

PRODUCT OVERVIEW

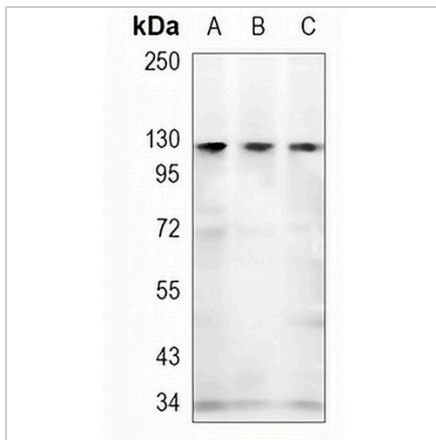
Description	Rabbit polyclonal antibody to Vinculin (Phospho-Y1133/1065)
Specificity	Recognizes endogenous levels of Vinculin protein only when phosphorylated at Y1133/1065
Antibody Type	Primary antibody
Immunogen	KLH-conjugated synthetic phosphopeptide corresponding to residues surrounding Y1133/1065 of human Vinculin. The exact sequence is proprietary.
Purification	The antibody was purified by immunogen affinity chromatography.
Molecular Weight	Predicted: 123 kD; Observed: 124 kD
Form/Buffer	Liquid in 0.42% Potassium phosphate, 0.87% Sodium chloride, pH 7.3, 30% glycerol, and 0.01% sodium azide.
Alternative Names	Vinculin; Metavinculin; MV
Gene Symbol	VCL
Entrez Gene	7414(Human); 22330(Mouse); 305679(Rat)
SwissProt	P18206(Human); Q64727(Mouse); P85972(Rat)

*AREX continuously optimizes our products. Webpage content may not reflect the latest updates. For inquiries, please contact info@arexbio.com or your local distributor.

*Clone Number, Reactivity, Source/Host and Clonality can be found in the product name and Key Features section above.

DATASHEET**Vinculin (Phospho-Y1133/1065) Rabbit Polyclonal Antibody**

CAT. NO. APA11814

DATA

Western blot analysis of Vinculin (Phospho-Y1133/1065) expression in mouse kidney (A), rat liver (B), rat kidney (C) whole cell lysates. (Predicted band size: 123 kD; Observed band size: 124 kD)

STORAGE

Store at 4°C short term. For long term storage, store at -20°C, avoiding freeze/thaw cycles.

NOTE

For Research Use Only. Not for diagnostic, therapeutics, prophylactic or in vivo use.