

DATASHEET

Claudin 5 Rabbit Polyclonal Antibody

CAT. NO. APA11823

KEY FEATURES

Target	Claudin 5	Source / Host	Rabbit
Reactivity	Human, Mouse	Clonality	Polyclonal
Applications	WB	Conjugation	Unconjugated
Form / Buffer	Liquid in 0.42% Potassium phosphate, 0.87% Sodium chloride, pH 7.3, 30% glycerol, and 0.01% sodium azide.		Storage at -20°C

BACKGROUND

Plays a major role in tight junction-specific obliteration of the intercellular space.

APPLICATION

To ensure optimal assay performance, AREX recommends conducting reagent titration tailored to each testing system for optimal detection results.

WB	1:500 - 1:1000
----	----------------

*Results are sample-specific. Please refer to your local assay conditions and test parameters for reference.

PRODUCT OVERVIEW

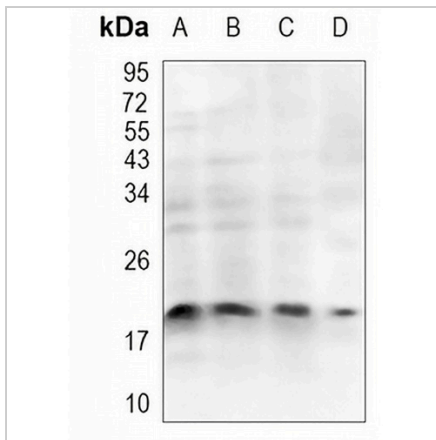
Description	Rabbit polyclonal antibody to Claudin 5
Specificity	Recognizes endogenous levels of Claudin 5 protein
Antibody Type	Primary antibody
Immunogen	KLH-conjugated synthetic peptide encompassing a sequence within the C-term region of human Claudin 5. The exact sequence is proprietary.
Purification	The antibody was purified by immunogen affinity chromatography.
Molecular Weight	Predicted: 23 kD; Observed: 19 kD
Form/Buffer	Liquid in 0.42% Potassium phosphate, 0.87% Sodium chloride, pH 7.3, 30% glycerol, and 0.01% sodium azide.
Alternative Names	AWAL; TMVCF; Claudin-5; Transmembrane protein deleted in VCFS; TMDVCF
Gene Symbol	CLDN5
Entrez Gene	7122(Human); 12741(Mouse)
SwissProt	O00501(Human); O54942(Mouse)

*AREX continuously optimizes our products. Webpage content may not reflect the latest updates. For inquiries, please contact info@arexbio.com or your local distributor.

*Clone Number, Reactivity, Source/Host and Clonality can be found in the product name and Key Features section above.

DATASHEET**Claudin 5 Rabbit Polyclonal Antibody**

CAT. NO. APA11823

DATA

Western blot analysis of Claudin 5 expression in 293T (A), H1792 (B), HCT116 (C), mouse liver (D) whole cell lysates. (Predicted band size: 23 kD; Observed band size: 19 kD)

STORAGE

Store at 4°C short term. For long term storage, store at -20°C, avoiding freeze/thaw cycles.

NOTE

For Research Use Only. Not for diagnostic, therapeutics, prophylactic or in vivo use.