

DATASHEET

TBC1D3 Rabbit Polyclonal Antibody

CAT. NO. APA11825

KEY FEATURES

Target	TBC1D3	Source / Host	Rabbit
Reactivity	Human	Clonality	Polyclonal
Applications	WB	Conjugation	Unconjugated
Form / Buffer	Liquid in 0.42% Potassium phosphate, 0.87% Sodium chloride, pH 7.3, 30% glycerol, and 0.01% sodium azide.		Storage at -20°C

BACKGROUND

Acts as a GTPase activating protein for RAB5. Does not act on RAB4 or RAB11 .

APPLICATION

To ensure optimal assay performance, AREX recommends conducting reagent titration tailored to each testing system for optimal detection results.

WB	1:500 - 1:1000
----	----------------

*Results are sample-specific. Please refer to your local assay conditions and test parameters for reference.

PRODUCT OVERVIEW

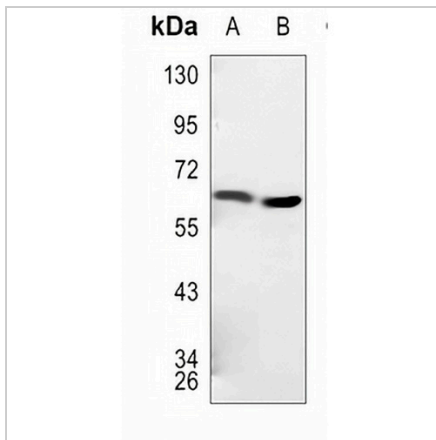
Description	Rabbit polyclonal antibody to TBC1D3
Specificity	Recognizes endogenous levels of TBC1D3 protein
Antibody Type	Primary antibody
Immunogen	KLH-conjugated synthetic peptide encompassing a sequence within the C-term region of human TBC1D3. The exact sequence is proprietary.
Purification	The antibody was purified by immunogen affinity chromatography.
Molecular Weight	Predicted: 62 kD; Observed: 62 kD
Form/Buffer	Liquid in 0.42% Potassium phosphate, 0.87% Sodium chloride, pH 7.3, 30% glycerol, and 0.01% sodium azide.
Alternative Names	TBC1D3; PRC17; TBC1D3A; TBC1 domain family member 3; Prostate cancer gene 17 protein; Protein TRE17-alpha; Rab GTPase-activating protein PRC17; TBC1D3B; TBC1D3I; TBC1 domain family member 3B; TBC1D3C; TBC1D3D; TBC1 domain family member 3C
Gene Symbol	TBC1D3
Entrez Gene	414059; 727735; 84218; 643947; 414060; 653380; 654341; 729873(Human)
SwissProt	Q8IZP1; A6NDS4; Q6IPX1(Human)

*AREX continuously optimizes our products. Webpage content may not reflect the latest updates. For inquiries, please contact info@arexbio.com or your local distributor.

*Clone Number, Reactivity, Source/Host and Clonality can be found in the product name and Key Features section above.

DATASHEET**TBC1D3 Rabbit Polyclonal Antibody**

CAT. NO. APA11825

DATA

Western blot analysis of TBC1D3 expression in SGC7901 (A), Panc1 (B) whole cell lysates.
(Predicted band size: 62 kD; Observed band size: 62 kD)

STORAGE

Store at 4°C short term. For long term storage, store at -20°C, avoiding freeze/thaw cycles.

NOTE

For Research Use Only. Not for diagnostic, therapeutics, prophylactic or in vivo use.