

DATASHEET

CD158f2 Rabbit Polyclonal Antibody

CAT. NO. APA11829

KEY FEATURES

| | | | |
|---------------|---|---------------|---------------------|
| Target | CD158f2 | Source / Host | Rabbit |
| Reactivity | Human, Mouse, Rat | Clonality | Polyclonal |
| Applications | WB | Conjugation | Unconjugated |
| Form / Buffer | Liquid in 0.42% Potassium phosphate, 0.87% Sodium chloride, pH 7.3, 30% glycerol, and 0.01% sodium azide. | | Storage at -20°C |

BACKGROUND

Receptor on natural killer (NK) cells for HLA-C alleles. Inhibits the activity of NK cells thus preventing cell lysis.

APPLICATION

To ensure optimal assay performance, AREX recommends conducting reagent titration tailored to each testing system for optimal detection results.

| | |
|----|----------------|
| WB | 1:500 - 1:1000 |
|----|----------------|

*Results are sample-specific. Please refer to your local assay conditions and test parameters for reference.

PRODUCT OVERVIEW

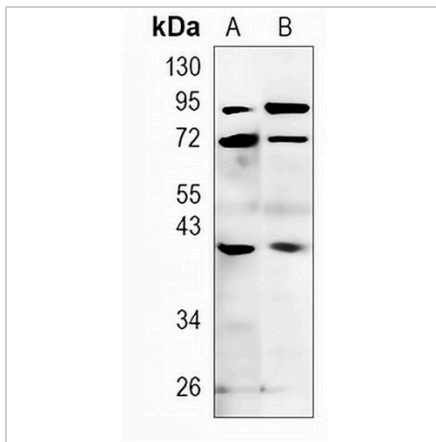
| | |
|-------------------|--|
| Description | Rabbit polyclonal antibody to CD158f2 |
| Specificity | Recognizes endogenous levels of CD158f2 protein |
| Antibody Type | Primary antibody |
| Immunogen | KLH-conjugated synthetic peptide encompassing a sequence within the center region of human CD158f2. The exact sequence is proprietary. |
| Purification | The antibody was purified by immunogen affinity chromatography. |
| Molecular Weight | Predicted: 40 kD; Observed: 40 kD |
| Form/Buffer | Liquid in 0.42% Potassium phosphate, 0.87% Sodium chloride, pH 7.3, 30% glycerol, and 0.01% sodium azide. |
| Alternative Names | CD158F; CD158F2; KIR2DL5; KIR2DLX; Killer cell immunoglobulin-like receptor 2DL5B; CD158 antigen-like family member F2; Killer cell immunoglobulin-like receptor 2DLX; CD158f2 |
| Gene Symbol | KIR2DL5B |
| Entrez Gene | 553128(Human) |
| SwissProt | Q8NHK3(Human) |

*AREX continuously optimizes our products. Webpage content may not reflect the latest updates. For inquiries, please contact info@arexbio.com or your local distributor.

*Clone Number, Reactivity, Source/Host and Clonality can be found in the product name and Key Features section above.

DATASHEET**CD158f2 Rabbit Polyclonal Antibody**

CAT. NO. APA11829

DATA

Western blot analysis of CD158f2 expression in mouse brain (A), rat brain (B) whole cell lysates. (Predicted band size: 40 kD; Observed band size: 40 kD)

STORAGE

Store at 4°C short term. For long term storage, store at -20°C, avoiding freeze/thaw cycles.

NOTE

For Research Use Only. Not for diagnostic, therapeutics, prophylactic or in vivo use.