

DATASHEET

MYL2 (Phospho-S15) Rabbit Polyclonal Antibody

CAT. NO. APA11839

KEY FEATURES

Target	MYL2 (Phospho-S15)	Source / Host	Rabbit
Reactivity	Human, Rat	Clonality	Polyclonal
Applications	WB	Conjugation	Unconjugated
Form / Buffer	Liquid in 0.42% Potassium phosphate, 0.87% Sodium chloride, pH 7.3, 30% glycerol, and 0.01% sodium azide.		Storage at -20°C

BACKGROUND

Contractile protein that plays a role in heart development and function . Following phosphorylation, plays a role in cross-bridge cycling kinetics and cardiac muscle contraction by increasing myosin lever arm stiffness and promoting myosin head diffusion; as a consequence of the increase in maximum contraction force and calcium sensitivity of contraction force. These events altogether slow down myosin kinetics and prolong duty cycle resulting in accumulated myosins being cooperatively recruited to actin binding sites to sustain thin filament activation as a means to fine-tune myofilament calcium sensitivity to force . During cardiogenesis plays an early role in cardiac contractility by promoting cardiac myofibril assembly .

APPLICATION

To ensure optimal assay performance, AREX recommends conducting reagent titration tailored to each testing system for optimal detection results.

WB	1:500 - 1:1000
----	----------------

*Results are sample-specific. Please refer to your local assay conditions and test parameters for reference.

PRODUCT OVERVIEW

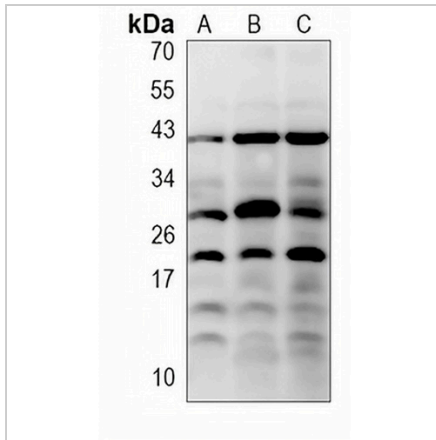
Description	Rabbit polyclonal antibody to MYL2 (Phospho-S15)
Specificity	Recognizes endogenous levels of MYL2 protein only when phosphorylated at S15
Antibody Type	Primary antibody
Immunogen	KLH-conjugated synthetic phosphopeptide corresponding to residues surrounding S15 of human MYL2. The exact sequence is proprietary.
Purification	The antibody was purified by immunogen affinity chromatography.
Molecular Weight	Predicted: 18 kD; Observed: 18 kD
Form/Buffer	Liquid in 0.42% Potassium phosphate, 0.87% Sodium chloride, pH 7.3, 30% glycerol, and 0.01% sodium azide.
Alternative Names	Myosin regulatory light chain 2 ventricular/cardiac muscle isoform; MLC-2; MLC-2v
Gene Symbol	MYL2
Entrez Gene	4633(Human); 363925(Rat)
SwissProt	P10916(Human); P08733(Rat)

*AREX continuously optimizes our products. Webpage content may not reflect the latest updates. For inquiries, please contact info@arexbio.com or your local distributor.

*Clone Number, Reactivity, Source/Host and Clonality can be found in the product name and Key Features section above.

DATASHEET**MYL2 (Phospho-S15) Rabbit Polyclonal Antibody**

CAT. NO. APA11839

DATA

Western blot analysis of MYL2 (Phospho-S15) expression in HEK293T (A), PC12 (B), SGC7901 (C) whole cell lysates. (Predicted band size: 18 kD; Observed band size: 18 kD)

STORAGE

Store at 4°C short term. For long term storage, store at -20°C, avoiding freeze/thaw cycles.

NOTE

For Research Use Only. Not for diagnostic, therapeutics, prophylactic or in vivo use.