

DATASHEET

MLKL (Phospho-S125) Rabbit Polyclonal Antibody

CAT. NO. APA11841

KEY FEATURES

Target	MLKL (Phospho-S125)	Source / Host	Rabbit
Reactivity	Human, Mouse	Clonality	Polyclonal
Applications	WB	Conjugation	Unconjugated
Form / Buffer	Liquid in 0.42% Potassium phosphate, 0.87% Sodium chloride, pH 7.3, 30% glycerol, and 0.01% sodium azide.	Storage	at-20°C

BACKGROUND

Pseudokinase that plays a key role in TNF-induced necroptosis, a programmed cell death process . Does not have protein kinase activity . Activated following phosphorylation by RIPK3, leading to homotrimerization, localization to the plasma membrane and execution of programmed necrosis characterized by calcium influx and plasma membrane damage .

APPLICATION

To ensure optimal assay performance, AREX recommends conducting reagent titration tailored to each testing system for optimal detection results.

WB	1:500 - 1:1000
----	----------------

*Results are sample-specific. Please refer to your local assay conditions and test parameters for reference.

PRODUCT OVERVIEW

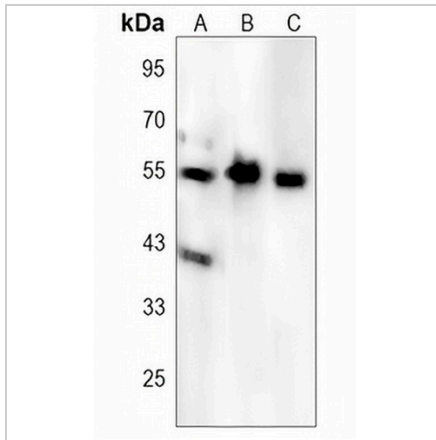
Description	Rabbit polyclonal antibody to MLKL (Phospho-S125)
Specificity	Recognizes endogenous levels of MLKL protein only when phosphorylated at S125.
Antibody Type	Primary antibody
Immunogen	KLH-conjugated synthetic phosphopeptide corresponding to residues surrounding S125 of human MLKL protein. The exact sequence is proprietary.
Purification	The antibody was purified by immunogen affinity chromatography.
Molecular Weight	Predicted: 54 kD; Observed: 54 kD
Form/Buffer	Liquid in 0.42% Potassium phosphate, 0.87% Sodium chloride, pH 7.3, 30% glycerol, and 0.01% sodium azide.
Alternative Names	Mixed lineage kinase domain-like protein; hMLKL
Gene Symbol	MLKL
Entrez Gene	197259(Human); 74568(Mouse)
SwissProt	Q8NB16(Human); Q9D2Y4(Mouse)

*AREX continuously optimizes our products. Webpage content may not reflect the latest updates. For inquiries, please contact info@arexbio.com or your local distributor.

*Clone Number, Reactivity, Source/Host and Clonality can be found in the product name and Key Features section above.

DATASHEET**MLKL (Phospho-S125) Rabbit Polyclonal Antibody**

CAT. NO. APA11841

DATA

Western blot analysis of MLKL (Phospho-S125) expression in HEK293T (A), H1792 (B), mouse liver (C) whole cell lysates. (Predicted band size: 54 kD; Observed band size: 54 kD)

STORAGE

Store at 4°C short term. For long term storage, store at -20°C, avoiding freeze/thaw cycles.

NOTE

For Research Use Only. Not for diagnostic, therapeutics, prophylactic or in vivo use.