

**DATASHEET**

**Ly6a Rabbit Polyclonal Antibody**

CAT. NO. APA11843

**KEY FEATURES**

Target	Ly6a	Source / Host	Rabbit
Reactivity	Mouse, Rat	Clonality	Polyclonal
Applications	WB	Conjugation	Unconjugated
Form / Buffer	Liquid in 0.42% Potassium phosphate, 0.87% Sodium chloride, pH 7.3, 30% glycerol, and 0.01% sodium azide.		Storage at -20°C

**BACKGROUND**

Predicted to enable acetylcholine receptor binding activity and acetylcholine receptor inhibitor activity. Predicted to be involved in acetylcholine receptor signaling pathway. Predicted to act upstream of or within response to bacterium. Predicted to be located in external side of plasma membrane. Predicted to be active in plasma membrane.

**APPLICATION**

To ensure optimal assay performance, AREX recommends conducting reagent titration tailored to each testing system for optimal detection results.

WB	1:500 - 1:1000
----	----------------

\*Results are sample-specific. Please refer to your local assay conditions and test parameters for reference.

**PRODUCT OVERVIEW**

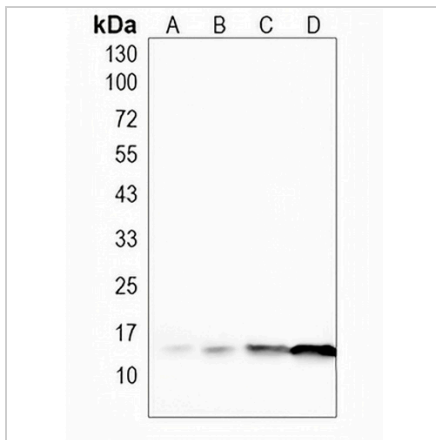
Description	Rabbit polyclonal antibody to Ly6a
Specificity	Recognizes endogenous levels of Ly6a protein
Antibody Type	Primary antibody
Immunogen	KLH-conjugated synthetic peptide encompassing a sequence within the center region of mouse Ly6a. The exact sequence is proprietary.
Purification	The antibody was purified by immunogen affinity chromatography.
Molecular Weight	Predicted: 14 kD; Observed: 14 kD
Form/Buffer	Liquid in 0.42% Potassium phosphate, 0.87% Sodium chloride, pH 7.3, 30% glycerol, and 0.01% sodium azide.
Alternative Names	Ly6; Lymphocyte antigen 6A-2/6E-1; Ly-6A.2/Ly-6E.1; Stem cell antigen 1 (SCA-1); T-cell-activating protein (TAP)
Gene Symbol	Ly6a
Entrez Gene	110454(Mouse)
SwissProt	P05533(Mouse)

\*AREX continuously optimizes our products. Webpage content may not reflect the latest updates. For inquiries, please contact [info@arexbio.com](mailto:info@arexbio.com) or your local distributor.

\*Clone Number, Reactivity, Source/Host and Clonality can be found in the product name and Key Features section above.

**DATASHEET****Ly6a Rabbit Polyclonal Antibody**

CAT. NO. APA11843

**DATA**

Western blot analysis of Ly6a expression in mouse lung (A), mouse liver (B), rat lung (C), rat liver (D) whole cell lysates. (Predicted band size: 14 kD; Observed band size: 14 kD)

**STORAGE**

Store at 4°C short term. For long term storage, store at -20°C, avoiding freeze/thaw cycles.

**NOTE**

For Research Use Only. Not for diagnostic, therapeutics, prophylactic or in vivo use.