

DATASHEET

CD85c Rabbit Polyclonal Antibody

CAT. NO. APA11846

KEY FEATURES

Target	CD85c	Source / Host	Rabbit
Reactivity	Human, Mouse	Clonality	Polyclonal
Applications	WB	Conjugation	Unconjugated
Form / Buffer	Liquid in 0.42% Potassium phosphate, 0.87% Sodium chloride, pH 7.3, 30% glycerol, and 0.01% sodium azide.		Storage at -20°C

BACKGROUND

May act as receptor for class I MHC antigens.

APPLICATION

To ensure optimal assay performance, AREX recommends conducting reagent titration tailored to each testing system for optimal detection results.

WB	1:500 - 1:1000
----	----------------

*Results are sample-specific. Please refer to your local assay conditions and test parameters for reference.

PRODUCT OVERVIEW

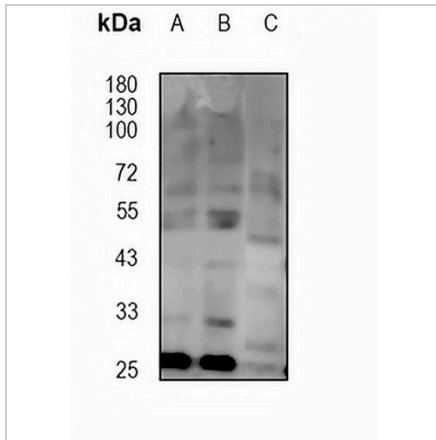
Description	Rabbit polyclonal antibody to CD85c
Specificity	Recognizes endogenous levels of CD85c protein
Antibody Type	Primary antibody
Immunogen	KLH-conjugated synthetic peptide encompassing a sequence within the N-terminal region of human CD85c. The exact sequence is proprietary.
Purification	The antibody was purified by immunogen affinity chromatography.
Molecular Weight	Predicted: 64, 52 kD; Observed: 64, 52 kD
Form/Buffer	Liquid in 0.42% Potassium phosphate, 0.87% Sodium chloride, pH 7.3, 30% glycerol, and 0.01% sodium azide.
Alternative Names	LIR8; Leukocyte immunoglobulin-like receptor subfamily B member 5; CD85 antigen-like family member C; Leukocyte immunoglobulin-like receptor 8; LIR-8; CD85c
Gene Symbol	LILRB5
Entrez Gene	10990(Human)
SwissProt	O75023(Human)

*AREX continuously optimizes our products. Webpage content may not reflect the latest updates. For inquiries, please contact info@arexbio.com or your local distributor.

*Clone Number, Reactivity, Source/Host and Clonality can be found in the product name and Key Features section above.

DATASHEET**CD85c Rabbit Polyclonal Antibody**

CAT. NO. APA11846

DATA

Western blot analysis of CD85c expression in A2780 (A), MCF7 (B), mouse muscle (C) whole cell lysates. (Predicted band size: 64, 52 kD; Observed band size: 64, 52 kD)

STORAGE

Store at 4°C short term. For long term storage, store at -20°C, avoiding freeze/thaw cycles.

NOTE

For Research Use Only. Not for diagnostic, therapeutics, prophylactic or in vivo use.