

DATASHEET

FDX1 (Phospho-S159) Rabbit Polyclonal Antibody

CAT. NO. APA11860

KEY FEATURES

Target	FDX1 (Phospho-S159)	Source / Host	Rabbit
Reactivity	Human, Mouse, Rat	Clonality	Polyclonal
Applications	WB	Conjugation	Unconjugated
Form / Buffer	Liquid in 0.42% Potassium phosphate, 0.87% Sodium chloride, pH 7.3, 30% glycerol, and 0.01% sodium azide.		Storage at -20°C

BACKGROUND

Essential for the synthesis of various steroid hormones . Participates in the reduction of mitochondrial cytochrome P450 for steroidogenesis . Transfers electrons from adrenodoxin reductase to CYP11A1, a cytochrome P450 that catalyzes cholesterol side-chain cleavage . Does not form a ternary complex with adrenodoxin reductase and CYP11A1 but shuttles between the two enzymes to transfer electrons .

APPLICATION

To ensure optimal assay performance, AREX recommends conducting reagent titration tailored to each testing system for optimal detection results.

WB	1:500 - 1:1000
----	----------------

*Results are sample-specific. Please refer to your local assay conditions and test parameters for reference.

PRODUCT OVERVIEW

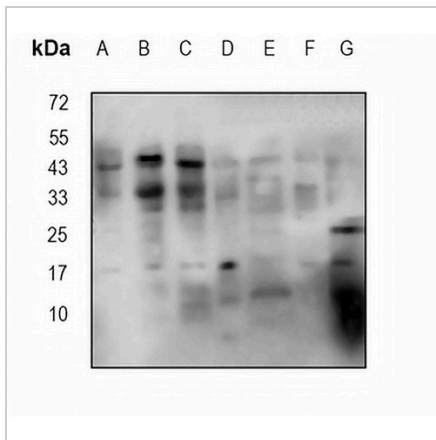
Description	Rabbit polyclonal antibody to FDX1 (Phospho-S159)
Specificity	Recognizes endogenous levels of FDX1 protein only when phosphorylated at S159
Antibody Type	Primary antibody
Immunogen	KLH-conjugated synthetic phosphopeptide corresponding to residues surrounding S159 of human FDX1. The exact sequence is proprietary.
Purification	The antibody was purified by immunogen affinity chromatography.
Molecular Weight	Predicted: 19 kD; Observed: 17 kD
Form/Buffer	Liquid in 0.42% Potassium phosphate, 0.87% Sodium chloride, pH 7.3, 30% glycerol, and 0.01% sodium azide.
Alternative Names	ADX; Adrenodoxin, mitochondrial; Adrenal ferredoxin; Ferredoxin-1; Hepatoredoxin
Gene Symbol	FDX1
Entrez Gene	54890(Human); 268420(Mouse); 303193(Rat)
SwissProt	P10109(Human); Q3TSG4(Mouse); D3ZKD3(Rat)

*AREX continuously optimizes our products. Webpage content may not reflect the latest updates. For inquiries, please contact info@arexbio.com or your local distributor.

*Clone Number, Reactivity, Source/Host and Clonality can be found in the product name and Key Features section above.

DATASHEET**FDX1 (Phospho-S159) Rabbit Polyclonal Antibody**

CAT. NO. APA11860

DATA

Western blot analysis of FDX1 (Phospho-S159) expression in U2OS (A), LO2 (B), A2780 (C), mouse liver (D), mouse kidney (E), rat liver (F), rat kidney (G) whole cell lysates. (Predicted band size: 19 kD; Observed band size: 17 kD)

STORAGE

Store at 4°C short term. For long term storage, store at -20°C, avoiding freeze/thaw cycles.

NOTE

For Research Use Only. Not for diagnostic, therapeutics, prophylactic or in vivo use.