

DATASHEET

Adipophilin (Phospho-S159) Rabbit Polyclonal Antibody

CAT. NO. APA11863

KEY FEATURES

Target	Adipophilin (Phospho-S159)	Source / Host	Rabbit
Reactivity	Human, Mouse, Rat	Clonality	Polyclonal
Applications	WB	Conjugation	Unconjugated
Form / Buffer	Liquid in 0.42% Potassium phosphate, 0.87% Sodium chloride, pH 7.3, 30% glycerol, and 0.01% sodium azide.	Storage	at-20°C

BACKGROUND

Structural component of lipid droplets, which is required for the formation and maintenance of lipid storage droplets.

APPLICATION

To ensure optimal assay performance, AREX recommends conducting reagent titration tailored to each testing system for optimal detection results.

WB	1:500 - 1:1000
----	----------------

*Results are sample-specific. Please refer to your local assay conditions and test parameters for reference.

PRODUCT OVERVIEW

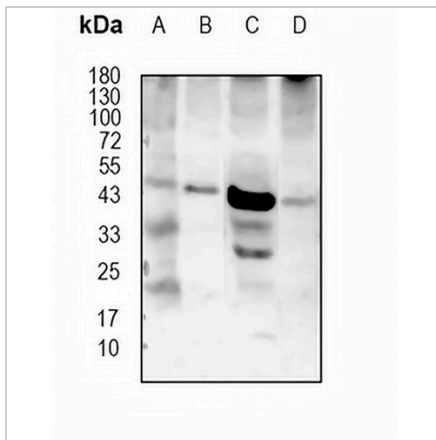
Description	Rabbit polyclonal antibody to Adipophilin (Phospho-S159)
Specificity	Recognizes endogenous levels of Adipophilin protein only when phosphorylated at S159
Antibody Type	Primary antibody
Immunogen	KLH-conjugated synthetic phosphopeptide corresponding to residues surrounding S159 of human Adipophilin. The exact sequence is proprietary.
Purification	The antibody was purified by immunogen affinity chromatography.
Molecular Weight	Predicted: 48 kD; Observed: 48 kD
Form/Buffer	Liquid in 0.42% Potassium phosphate, 0.87% Sodium chloride, pH 7.3, 30% glycerol, and 0.01% sodium azide.
Alternative Names	ADFP; Perilipin-2; Adipophilin; Adipose differentiation-related protein; ADRP
Gene Symbol	PLIN2
Entrez Gene	123(Human); 11520(Mouse)
SwissProt	Q99541(Human); P43883(Mouse)

*AREX continuously optimizes our products. Webpage content may not reflect the latest updates. For inquiries, please contact info@arexbio.com or your local distributor.

*Clone Number, Reactivity, Source/Host and Clonality can be found in the product name and Key Features section above.

DATASHEET**Adipophilin (Phospho-S159) Rabbit Polyclonal Antibody**

CAT. NO. APA11863

DATA

Western blot analysis of Adipophilin (Phospho-S159) expression in HepG2 (A), SiHa (B), mouse liver (C), rat liver (D) whole cell lysates. (Predicted band size: 48 kD; Observed band size: 48 kD)

STORAGE

Store at 4°C short term. For long term storage, store at -20°C, avoiding freeze/thaw cycles.

NOTE

For Research Use Only. Not for diagnostic, therapeutics, prophylactic or in vivo use.