

DATASHEET

LIMK1 (Phospho-S323) Rabbit Polyclonal Antibody

CAT. NO. APA11866

KEY FEATURES

Target	LIMK1 (Phospho-S323)	Source / Host	Rabbit
Reactivity	Human, Mouse, Rat	Clonality	Polyclonal
Applications	WB	Conjugation	Unconjugated
Form / Buffer	Liquid in 0.42% Potassium phosphate, 0.87% Sodium chloride, pH 7.3, 30% glycerol, and 0.01% sodium azide.		Storage at-20°C

BACKGROUND

Serine/threonine-protein kinase that plays an essential role in the regulation of actin filament dynamics. Acts downstream of several Rho family GTPase signal transduction pathways . Activated by upstream kinases including ROCK1, PAK1 and PAK4, which phosphorylate LIMK1 on a threonine residue located in its activation loop . LIMK1 subsequently phosphorylates and inactivates the actin binding/depolymerizing factors cofilin-1/CFL1, cofilin-2/CFL2 and destrin/DSTN, thereby preventing the cleavage of filamentous actin (F-actin), and stabilizing the actin cytoskeleton . In this way LIMK1 regulates several actin-dependent biological processes including cell motility, cell cycle progression, and differentiation . Phosphorylates TPPP on serine residues, thereby promoting microtubule disassembly .

APPLICATION

To ensure optimal assay performance, AREX recommends conducting reagent titration tailored to each testing system for optimal detection results.

WB	1:500 - 1:1000
----	----------------

*Results are sample-specific. Please refer to your local assay conditions and test parameters for reference.

PRODUCT OVERVIEW

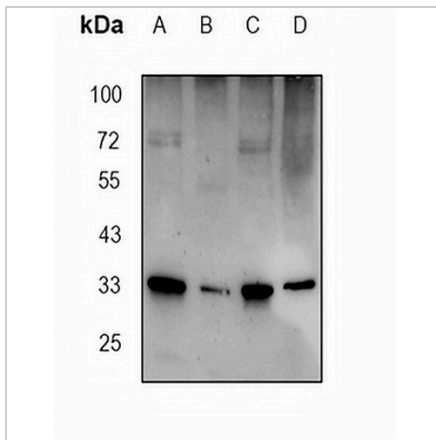
Description	Rabbit polyclonal antibody to LIMK1 (Phospho-S323)
Specificity	Recognizes endogenous levels of LIMK1 protein only when phosphorylated at S323
Antibody Type	Primary antibody
Immunogen	KLH-conjugated synthetic phosphopeptide corresponding to residues surrounding S323 of human LIMK1. The exact sequence is proprietary.
Purification	The antibody was purified by immunogen affinity chromatography.
Molecular Weight	Predicted: 72, 70, 33, 68 kD; Observed: 33 kD
Form/Buffer	Liquid in 0.42% Potassium phosphate, 0.87% Sodium chloride, pH 7.3, 30% glycerol, and 0.01% sodium azide.
Alternative Names	LIMK; LIM domain kinase 1; LIMK-1
Gene Symbol	LIMK1
Entrez Gene	3984(Human); 16885(Mouse)
SwissProt	P53667(Human); P53668(Mouse); P53669(Rat)

*AREX continuously optimizes our products. Webpage content may not reflect the latest updates. For inquiries, please contact info@arexbio.com or your local distributor.

*Clone Number, Reactivity, Source/Host and Clonality can be found in the product name and Key Features section above.

DATASHEET**LIMK1 (Phospho-S323) Rabbit Polyclonal Antibody**

CAT. NO. APA11866

DATA

Western blot analysis of LIMK1 (Phospho-S323) expression in mouse brain (A), mouse skin (B), rat brain (C), rat skin (D) whole cell lysates. (Predicted band size: 72, 70, 33, 68 kD; Observed band size: 33 kD)

STORAGE

Store at 4°C short term. For long term storage, store at -20°C, avoiding freeze/thaw cycles.

NOTE

For Research Use Only. Not for diagnostic, therapeutics, prophylactic or in vivo use.