

DATASHEET

Cyclin D3 (Phospho-T283) Rabbit Polyclonal Antibody

CAT. NO. APA11883

KEY FEATURES

| | | | |
|---------------|---|---------------|---------------------|
| Target | Cyclin D3 (Phospho-T283) | Source / Host | Rabbit |
| Reactivity | Human, Mouse, Rat, Bovine | Clonality | Polyclonal |
| Applications | WB, IHC | Conjugation | Unconjugated |
| Form / Buffer | Liquid in 0.42% Potassium phosphate, 0.87% Sodium chloride, pH 7.3, 30% glycerol, and 0.01% sodium azide. | | Storage at -20°C |

BACKGROUND

Regulatory component of the cyclin D3-CDK4 (DC) complex that phosphorylates and inhibits members of the retinoblastoma (RB) protein family including RB1 and regulates the cell-cycle during G(1)/S transition complex that phosphorylates and inhibits members of the retinoblastoma (RB) protein family including RB1 and regulates the cell-cycle during G(1)/S transition . Phosphorylation of RB1 allows dissociation of the transcription factor E2F from the RB/E2F complex and the subsequent transcription of E2F target genes which are responsible for the progression through the G(1) phase . Hypophosphorylates RB1 in early G(1) phase . Cyclin D-CDK4 complexes are major integrators of various mitogenic and antimitogenic signals .

APPLICATION

To ensure optimal assay performance, AREX recommends conducting reagent titration tailored to each testing system for optimal detection results.

| | |
|-----|----------------|
| WB | 1:500 - 1:1000 |
| IHC | 1:100 - 1:200 |

*Results are sample-specific. Please refer to your local assay conditions and test parameters for reference.

PRODUCT OVERVIEW

| | |
|-------------------|---|
| Description | Rabbit polyclonal antibody to Cyclin D3 (Phospho-T283) |
| Specificity | Recognizes endogenous levels of Cyclin D3 protein only when phosphorylated at T283. |
| Antibody Type | Primary antibody |
| Immunogen | KLH-conjugated synthetic phosphopeptide corresponding to residues surrounding T283 of human Cyclin D3 protein. The exact sequence is proprietary. |
| Purification | The antibody was purified by immunogen affinity chromatography. |
| Molecular Weight | Predicted: 32 kD; Observed: 32 kD |
| Form/Buffer | Liquid in 0.42% Potassium phosphate, 0.87% Sodium chloride, pH 7.3, 30% glycerol, and 0.01% sodium azide. |
| Alternative Names | G1/S-specific cyclin-D3 |
| Gene Symbol | CCND3 |
| Entrez Gene | 896(Human); 12445(Mouse); 25193(Rat) |
| SwissProt | P30281(Human); P30282(Mouse); P48961(Rat) |

*AREX continuously optimizes our products. Webpage content may not reflect the latest updates. For inquiries, please contact info@arexbio.com or your local distributor.

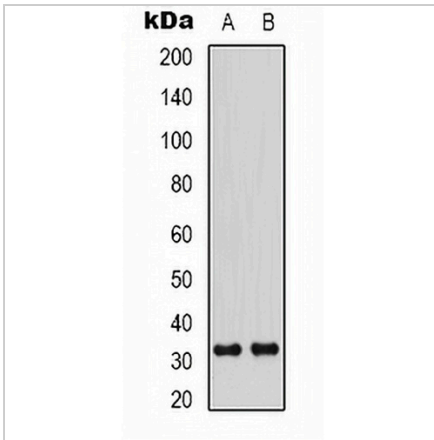
*Clone Number, Reactivity, Source/Host and Clonality can be found in the product name and Key Features section above.

DATASHEET

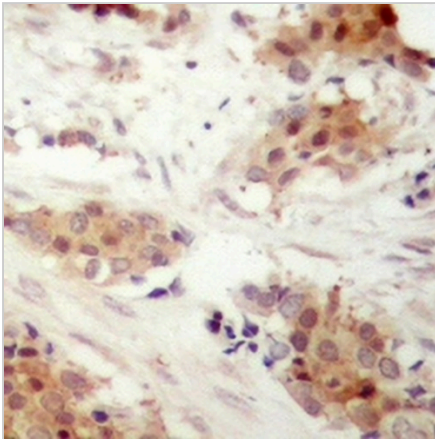
Cyclin D3 (Phospho-T283) Rabbit Polyclonal Antibody

CAT. NO. APA11883

DATA



Western blot analysis of Cyclin D3 (Phospho-T283) expression in HepG2 UV-treated (A), K562 UV-treated (B) whole cell lysates. (Predicted band size: 32 kD; Observed band size: 32 kD)



Immunohistochemical analysis of Cyclin D3 (Phospho-T283) staining in human breast cancer formalin fixed paraffin embedded tissue section. The section was pre-treated using heat mediated antigen retrieval with sodium citrate buffer (pH 6.0). The section was then incubated with the antibody at room temperature and detected using an HRP conjugated compact polymer system. DAB was used as the chromogen. The section was then counterstained with haematoxylin and mounted with DPX.

STORAGE

Store at 4°C short term. For long term storage, store at -20°C, avoiding freeze/thaw cycles.

NOTE

For Research Use Only. Not for diagnostic, therapeutics, prophylactic or in vivo use.