

**DATASHEET**

**IKB epsilon (Phospho-S22) Rabbit Polyclonal Antibody**

CAT. NO. APA11956

**KEY FEATURES**

Target	IKB epsilon (Phospho-S22)	Source / Host	Rabbit
Reactivity	Human, Mouse, Rat, Bovine	Clonality	Polyclonal
Applications	WB, IHC, IF/ICC	Conjugation	Unconjugated
Form / Buffer	Liquid in 0.42% Potassium phosphate, 0.87% Sodium chloride, pH 7.3, 30% glycerol, and 0.01% sodium azide.	Storage	at-20°C

**BACKGROUND**

Sequesters NF-kappa-B transcription factor complexes in the cytoplasm, thereby inhibiting their activity . Sequestered complexes include NFKB1-RELA (p50-p65) and NFKB1-REL (p50-c-Rel) complexes . Limits B-cell activation in response to pathogens, and also plays an important role in B-cell development .

**APPLICATION**

To ensure optimal assay performance, AREX recommends conducting reagent titration tailored to each testing system for optimal detection results.

WB	1:500 - 1:1000
IHC	1:100 - 1:200
IF/ICC	1:100 - 1:500

\*Results are sample-specific. Please refer to your local assay conditions and test parameters for reference.

**PRODUCT OVERVIEW**

Description	Rabbit polyclonal antibody to IKB epsilon (Phospho-S22)
Specificity	Recognizes endogenous levels of IKB epsilon protein only when phosphorylated at S22.
Antibody Type	Primary antibody
Immunogen	KLH-conjugated synthetic phosphopeptide corresponding to residues surrounding S22 of human IKB epsilon protein. The exact sequence is proprietary.
Purification	The antibody was purified by immunogen affinity chromatography.
Molecular Weight	Predicted: 52 kD; Observed: 45 kD
Form/Buffer	Liquid in 0.42% Potassium phosphate, 0.87% Sodium chloride, pH 7.3, 30% glycerol, and 0.01% sodium azide.
Alternative Names	IKBE; NF-kappa-B inhibitor epsilon; NF-kappa-BIE; I-kappa-B-epsilon; IkB-E; IkB-epsilon; IkappaBepsilon
Gene Symbol	NFKBIE
Entrez Gene	4794(Human); 18037(Mouse)
SwissProt	O00221(Human); O54910(Mouse)

\*AREX continuously optimizes our products. Webpage content may not reflect the latest updates. For inquiries, please contact [info@arexbio.com](mailto:info@arexbio.com) or your local distributor.

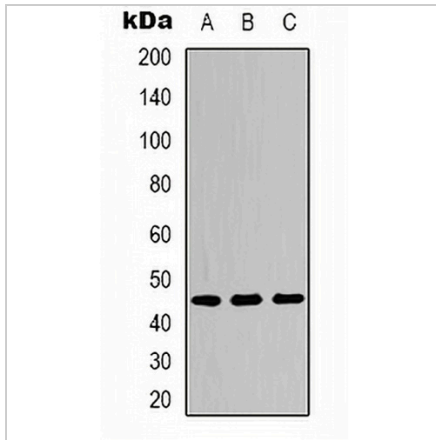
\*Clone Number, Reactivity, Source/Host and Clonality can be found in the product name and Key Features section above.

**DATASHEET**

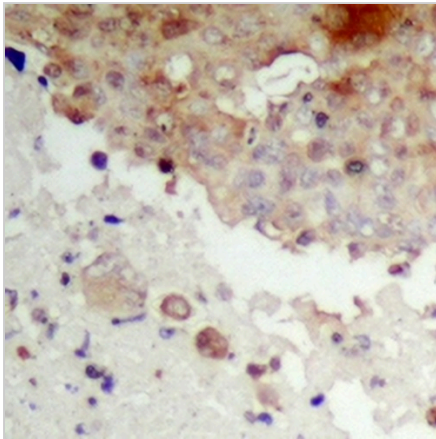
**IκB epsilon (Phospho-S22) Rabbit Polyclonal Antibody**

CAT. NO. APA11956

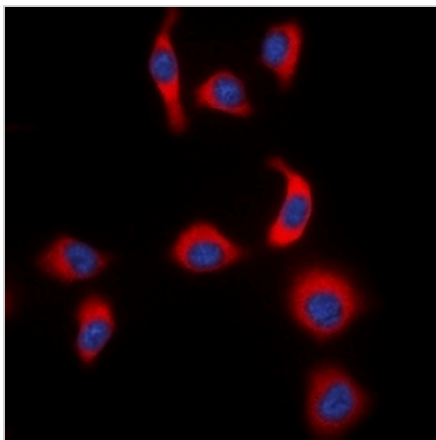
**DATA**



Western blot analysis of IκB epsilon (Phospho-S22) expression in HeLa LPS-treated (A), NIH3T3 LPS-treated (B), PC12 H<sub>2</sub>O<sub>2</sub>-treated (C) whole cell lysates. (Predicted band size: 52 kD; Observed band size: 45 kD)



Immunohistochemical analysis of IκB epsilon (Phospho-S22) staining in human prostate cancer formalin fixed paraffin embedded tissue section. The section was pre-treated using heat mediated antigen retrieval with sodium citrate buffer (pH 6.0). The section was then incubated with the antibody at room temperature and detected using an HRP conjugated compact polymer system. DAB was used as the chromogen. The section was then counterstained with haematoxylin and mounted with DPX.



Immunofluorescent analysis of IκB epsilon (Phospho-S22) staining in HeLa cells. Formalin-fixed cells were permeabilized with 0.1% Triton X-100 in TBS for 5-10 minutes and blocked with 3% BSA-PBS for 30 minutes at room temperature. Cells were probed with the primary antibody in 3% BSA-PBS and incubated overnight at 4 °C in a humidified chamber. Cells were washed with PBST and incubated with a DyLight 594-conjugated secondary antibody (red) in PBS at room temperature in the dark. DAPI was used to stain the cell nuclei (blue).

**STORAGE**

Store at 4°C short term. For long term storage, store at -20°C, avoiding freeze/thaw cycles.

**NOTE**

For Research Use Only. Not for diagnostic, therapeutics, prophylactic or in vivo use.