

DATASHEET

FANCD2 Rabbit Polyclonal Antibody

CAT. NO. APA11957

KEY FEATURES

Target	FANCD2	Source / Host	Rabbit
Reactivity	Human, Mouse, Rat	Clonality	Polyclonal
Applications	WB, IHC	Conjugation	Unconjugated
Form / Buffer	Liquid in 0.42% Potassium phosphate, 0.87% Sodium chloride, pH 7.3, 30% glycerol, and 0.01% sodium azide.		Storage at -20°C

BACKGROUND

Required for maintenance of chromosomal stability . Promotes accurate and efficient pairing of homologs during meiosis . Involved in the repair of DNA double-strand breaks, both by homologous recombination and single-strand annealing . The FANCI-FANCD2 complex binds and scans double-stranded DNA (dsDNA) for DNA damage; this complex stalls at DNA junctions between double-stranded DNA and single-stranded DNA . May participate in S phase and G2 phase checkpoint activation upon DNA damage . Plays a role in preventing breakage and loss of missegregating chromatin at the end of cell division, particularly after replication stress . Required for the targeting, or stabilization, of BLM to non-centromeric abnormal structures induced by replicative stress .

APPLICATION

To ensure optimal assay performance, AREX recommends conducting reagent titration tailored to each testing system for optimal detection results.

WB	1:500 - 1:1000
IHC	1:100 - 1:200

*Results are sample-specific. Please refer to your local assay conditions and test parameters for reference.

PRODUCT OVERVIEW

Description	Rabbit polyclonal antibody to FANCD2
Specificity	Recognizes endogenous levels of FANCD2 protein.
Antibody Type	Primary antibody
Immunogen	KLH-conjugated synthetic peptide encompassing a sequence within the N-term region of human FANCD2. The exact sequence is proprietary.
Purification	The antibody was purified by immunogen affinity chromatography.
Molecular Weight	Predicted: 164 kD; Observed: 166 kD
Form/Buffer	Liquid in 0.42% Potassium phosphate, 0.87% Sodium chloride, pH 7.3, 30% glycerol, and 0.01% sodium azide.
Alternative Names	FACD; Fanconi anemia group D2 protein; Protein FACD2
Gene Symbol	FANCD2
Entrez Gene	2177(Human); 211651(Mouse); 312641(Rat)
SwissProt	Q9BXW9(Human); Q80V62(Mouse); Q6IV68(Rat)

*AREX continuously optimizes our products. Webpage content may not reflect the latest updates. For inquiries, please contact info@arexbio.com or your local distributor.

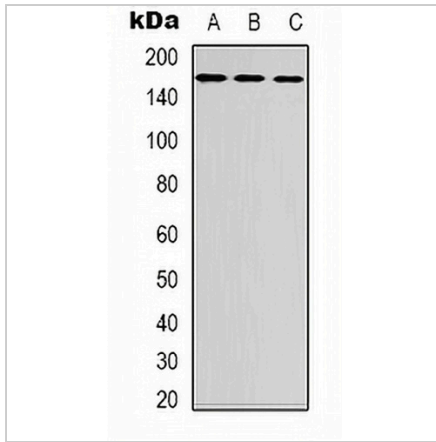
*Clone Number, Reactivity, Source/Host and Clonality can be found in the product name and Key Features section above.

DATASHEET

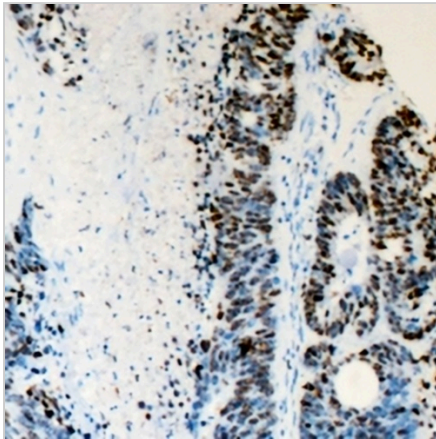
FANCD2 Rabbit Polyclonal Antibody

CAT. NO. APA11957

DATA



Western blot analysis of FANCD2 expression in HT29 (A), SP20 (B), mouse liver (C) whole cell lysates. (Predicted band size: 164 kD; Observed band size: 166 kD)



Immunohistochemical analysis of FANCD2 staining in human colon cancer formalin fixed paraffin embedded tissue section. The section was pre-treated using heat mediated antigen retrieval with sodium citrate buffer (pH 6.0). The section was then incubated with the antibody at room temperature and detected using an HRP conjugated compact polymer system. DAB was used as the chromogen. The section was then counterstained with haematoxylin and mounted with DPX.

STORAGE

Store at 4°C short term. For long term storage, store at -20°C, avoiding freeze/thaw cycles.

NOTE

For Research Use Only. Not for diagnostic, therapeutics, prophylactic or in vivo use.