

DATASHEET

RB1 Rabbit Polyclonal Antibody

CAT. NO. APA11974

KEY FEATURES

Target	RB1	Source / Host	Rabbit
Reactivity	Human, Mouse, Rat	Clonality	Polyclonal
Applications	WB, IHC	Conjugation	Unconjugated
Form / Buffer	Liquid in 0.42% Potassium phosphate, 0.87% Sodium chloride, pH 7.3, 30% glycerol, and 0.01% sodium azide.		Storage at -20°C

BACKGROUND

Tumor suppressor that is a key regulator of the G1/S transition of the cell cycle . The hypophosphorylated form binds transcription regulators of the E2F family, preventing transcription of E2F-responsive genes . Both physically blocks E2Fs transactivating domain and recruits chromatin-modifying enzymes that actively repress transcription . Cyclin and CDK-dependent phosphorylation of RB1 induces its dissociation from E2Fs, thereby activating transcription of E2F responsive genes and triggering entry into S phase . RB1 also promotes the G0-G1 transition upon phosphorylation and activation by CDK3/cyclin-C . Directly involved in heterochromatin formation by maintaining overall chromatin structure and, in particular, that of constitutive heterochromatin by stabilizing histone methylation.

APPLICATION

To ensure optimal assay performance, AREX recommends conducting reagent titration tailored to each testing system for optimal detection results.

WB	1:500 - 1:1000
IHC	1:100 - 1:200

*Results are sample-specific. Please refer to your local assay conditions and test parameters for reference.

PRODUCT OVERVIEW

Description	Rabbit polyclonal antibody to RB1
Specificity	Recognizes endogenous levels of RB1 protein.
Antibody Type	Primary antibody
Immunogen	KLH-conjugated synthetic peptide encompassing a sequence within the center region of human RB1. The exact sequence is proprietary.
Purification	The antibody was purified by immunogen affinity chromatography.
Molecular Weight	Predicted: 106 kD; Observed: 110 kD
Form/Buffer	Liquid in 0.42% Potassium phosphate, 0.87% Sodium chloride, pH 7.3, 30% glycerol, and 0.01% sodium azide.
Alternative Names	Retinoblastoma-associated protein; p105-Rb; pRb; Rb; pp110
Gene Symbol	RB1
Entrez Gene	5925(Human); 19645(Mouse); 24708(Rat)
SwissProt	P06400(Human); P13405(Mouse); P33568(Rat)

*AREX continuously optimizes our products. Webpage content may not reflect the latest updates. For inquiries, please contact info@arexbio.com or your local distributor.

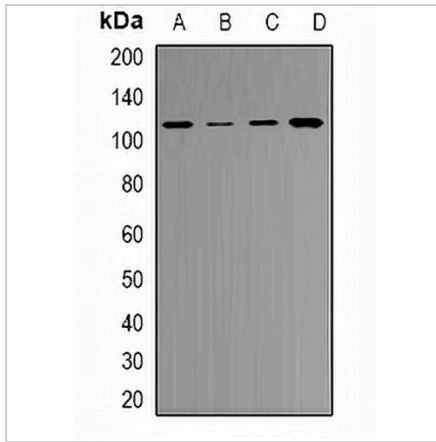
*Clone Number, Reactivity, Source/Host and Clonality can be found in the product name and Key Features section above.

DATASHEET

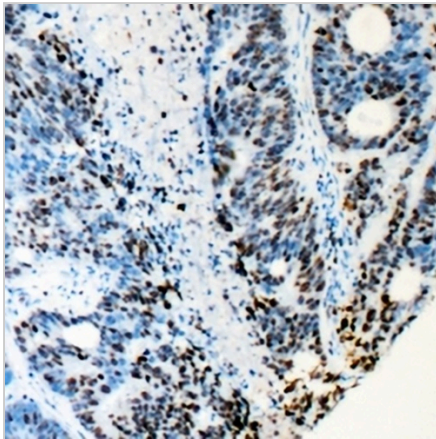
RB1 Rabbit Polyclonal Antibody

CAT. NO. APA11974

DATA



Western blot analysis of RB1 expression in A549 (A), NIH3T3 (B), K562 (C), PC12 (D) whole cell lysates. (Predicted band size: 106 kD; Observed band size: 110 kD)



Immunohistochemical analysis of RB1 staining in human colon cancer formalin fixed paraffin embedded tissue section. The section was pre-treated using heat mediated antigen retrieval with sodium citrate buffer (pH 6.0). The section was then incubated with the antibody at room temperature and detected using an HRP conjugated compact polymer system. DAB was used as the chromogen. The section was then counterstained with haematoxylin and mounted with DPX.

STORAGE

Store at 4°C short term. For long term storage, store at -20°C, avoiding freeze/thaw cycles.

NOTE

For Research Use Only. Not for diagnostic, therapeutics, prophylactic or in vivo use.