

DATASHEET

HSP27 (Phospho-S82) Rabbit Polyclonal Antibody

CAT. NO. APA11983

KEY FEATURES

Target	HSP27 (Phospho-S82)	Source / Host	Rabbit
Reactivity	Human, Mouse, Bovine, Dog	Clonality	Polyclonal
Applications	WB, IHC	Conjugation	Unconjugated
Form / Buffer	Liquid in 0.42% Potassium phosphate, 0.87% Sodium chloride, pH 7.3, 30% glycerol, and 0.01% sodium azide.	Storage	at-20°C

BACKGROUND

Small heat shock protein which functions as a molecular chaperone probably maintaining denatured proteins in a folding-competent state . Plays a role in stress resistance and actin organization . Through its molecular chaperone activity may regulate numerous biological processes including the phosphorylation and the axonal transport of neurofilament proteins .

APPLICATION

To ensure optimal assay performance, AREX recommends conducting reagent titration tailored to each testing system for optimal detection results.

WB	1:500 - 1:1000
IHC	1:100 - 1:200

*Results are sample-specific. Please refer to your local assay conditions and test parameters for reference.

PRODUCT OVERVIEW

Description	Rabbit polyclonal antibody to HSP27 (Phospho-S82)
Specificity	Recognizes endogenous levels of HSP27 protein only when phosphorylated at S82.
Antibody Type	Primary antibody
Immunogen	KLH-conjugated synthetic phosphopeptide corresponding to residues surrounding S82 of human HSP27 protein. The exact sequence is proprietary.
Purification	The antibody was purified by immunogen affinity chromatography.
Molecular Weight	Predicted: 22 kD; Observed: 27 kD
Form/Buffer	Liquid in 0.42% Potassium phosphate, 0.87% Sodium chloride, pH 7.3, 30% glycerol, and 0.01% sodium azide.
Alternative Names	HSP27; HSP28; Heat shock protein beta-1; HspB1; 28 kDa heat shock protein; Estrogen-regulated 24 kDa protein; Heat shock 27 kDa protein; HSP 27; Stress-responsive protein 27; SRP27
Gene Symbol	HSPB1
Entrez Gene	3315(Human); 15507(Mouse)
SwissProt	P04792(Human); P14602(Mouse)

*AREX continuously optimizes our products. Webpage content may not reflect the latest updates. For inquiries, please contact info@arexbio.com or your local distributor.

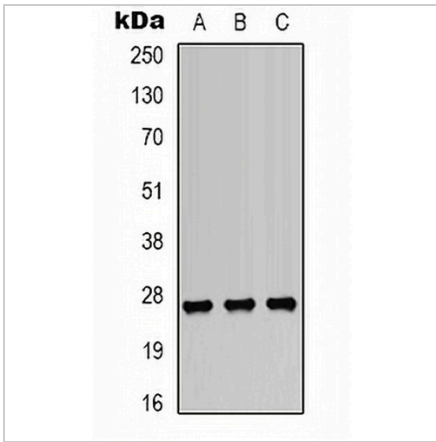
*Clone Number, Reactivity, Source/Host and Clonality can be found in the product name and Key Features section above.

DATASHEET

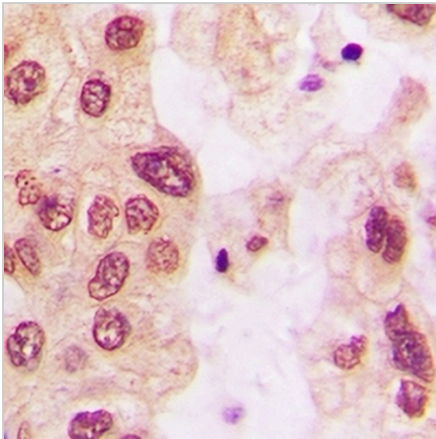
HSP27 (Phospho-S82) Rabbit Polyclonal Antibody

CAT. NO. APA11983

DATA



Western blot analysis of HSP27 (Phospho-S82) expression in A549 (A), HepG2 (B), K562 (C) whole cell lysates. (Predicted band size: 22 kD; Observed band size: 27 kD)



Immunohistochemical analysis of HSP27 (Phospho-S82) staining in human lung cancer formalin fixed paraffin embedded tissue section. The section was pre-treated using heat mediated antigen retrieval with sodium citrate buffer (pH 6.0). The section was then incubated with the antibody at room temperature and detected using an HRP conjugated compact polymer system. DAB was used as the chromogen. The section was then counterstained with haematoxylin and mounted with DPX.

STORAGE

Store at 4°C short term. For long term storage, store at -20°C, avoiding freeze/thaw cycles.

NOTE

For Research Use Only. Not for diagnostic, therapeutics, prophylactic or in vivo use.