

**DATASHEET**

**BCL2 (Phospho-T56) Rabbit Polyclonal Antibody**

CAT. NO. APA11986

**KEY FEATURES**

Target	BCL2 (Phospho-T56)	Source / Host	Rabbit
Reactivity	Human, Rat	Clonality	Polyclonal
Applications	WB, IHC, IF/ICC, IP	Conjugation	Unconjugated
Form / Buffer	Liquid in 0.42% Potassium phosphate, 0.87% Sodium chloride, pH 7.3, 30% glycerol, and 0.01% sodium azide.		Storage at -20°C

**BACKGROUND**

Suppresses apoptosis in a variety of cell systems including factor-dependent lymphohematopoietic and neural cells . Regulates cell death by controlling the mitochondrial membrane permeability . Appears to function in a feedback loop system with caspases . Inhibits caspase activity either by preventing the release of cytochrome c from the mitochondria and/or by binding to the apoptosis-activating factor (APAF-1) . Also acts as an inhibitor of autophagy: interacts with BECN1 and AMBRA1 during non-starvation conditions and inhibits their autophagy function . May attenuate inflammation by impairing NLRP1-inflammasome activation, hence CASP1 activation and IL1B release .

**APPLICATION**

To ensure optimal assay performance, AREX recommends conducting reagent titration tailored to each testing system for optimal detection results.

WB	1:500 - 1:1000
IHC	1:100 - 1:200
IF/ICC	1:100 - 1:500
IP	1:10 - 1:100

\*Results are sample-specific. Please refer to your local assay conditions and test parameters for reference.

**PRODUCT OVERVIEW**

Description	Rabbit polyclonal antibody to BCL2 (Phospho-T56)
Specificity	Recognizes endogenous levels of BCL2 protein only when phosphorylated at T56.
Antibody Type	Primary antibody
Immunogen	KLH-conjugated synthetic phosphopeptide corresponding to residues surrounding T56 of human BCL2 protein. The exact sequence is proprietary.
Purification	The antibody was purified by immunogen affinity chromatography.
Molecular Weight	Predicted: 26 kD; Observed: 28 kD
Form/Buffer	Liquid in 0.42% Potassium phosphate, 0.87% Sodium chloride, pH 7.3, 30% glycerol, and 0.01% sodium azide.
Alternative Names	Apoptosis regulator Bcl-2
Gene Symbol	BCL2
Entrez Gene	596(Human); 24224(Rat)
SwissProt	P10415(Human); P49950(Rat)

\*AREX continuously optimizes our products. Webpage content may not reflect the latest updates. For inquiries, please contact [info@arexbio.com](mailto:info@arexbio.com) or your local distributor.

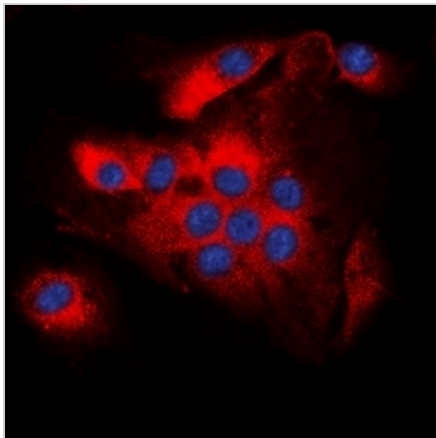
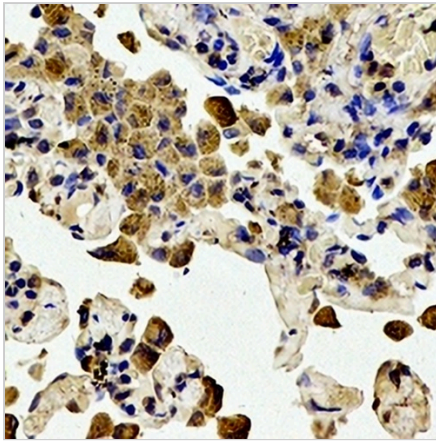
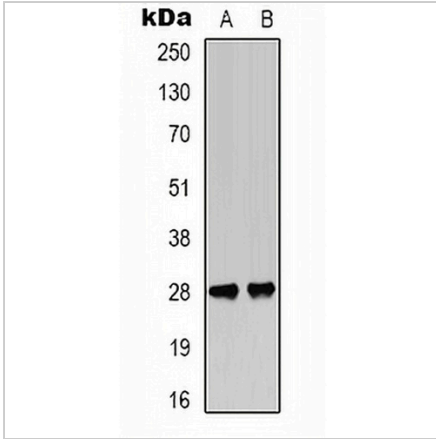
\*Clone Number, Reactivity, Source/Host and Clonality can be found in the product name and Key Features section above.

**DATASHEET**

**BCL2 (Phospho-T56) Rabbit Polyclonal Antibody**

CAT. NO. APA11986

**DATA**



**STORAGE**

Store at 4°C short term. For long term storage, store at -20°C, avoiding freeze/thaw cycles.

**NOTE**

For Research Use Only. Not for diagnostic, therapeutics, prophylactic or in vivo use.