

DATASHEET

AKT (Phospho-Y326) Rabbit Polyclonal Antibody

CAT. NO. APA11995

KEY FEATURES

Target	AKT (Phospho-Y326)	Source / Host	Rabbit
Reactivity	Human, Mouse, Rat, Bovine, Sheep	Clonality	Polyclonal
Applications	WB	Conjugation	Unconjugated
Form / Buffer	Liquid in 0.42% Potassium phosphate, 0.87% Sodium chloride, pH 7.3, 30% glycerol, and 0.01% sodium azide.	Storage	at-20°C

BACKGROUND

AKT1 is one of 3 closely related serine/threonine-protein kinases (AKT1, AKT2 and AKT3) called the AKT kinase, and which regulate many processes including metabolism, proliferation, cell survival, growth and angiogenesis called the AKT kinase, and which regulate many processes including metabolism, proliferation, cell survival, growth and angiogenesis . This is mediated through serine and/or threonine phosphorylation of a range of downstream substrates . Over 100 substrate candidates have been reported so far, but for most of them, no isoform specificity has been reported . AKT is responsible of the regulation of glucose uptake by mediating insulin-induced translocation of the SLC2A4/GLUT4 glucose transporter to the cell surface .

APPLICATION

To ensure optimal assay performance, AREX recommends conducting reagent titration tailored to each testing system for optimal detection results.

WB	1:500 - 1:1000
----	----------------

*Results are sample-specific. Please refer to your local assay conditions and test parameters for reference.

PRODUCT OVERVIEW

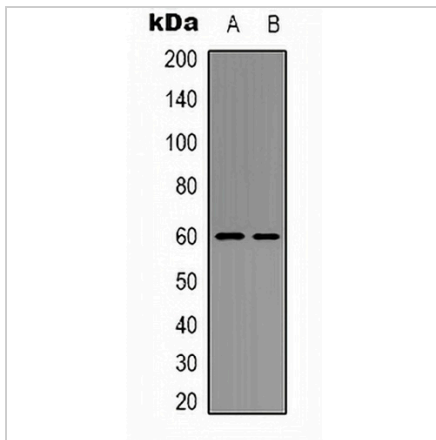
Description	Rabbit polyclonal antibody to AKT (Phospho-Y326)
Specificity	Recognizes endogenous levels of AKT protein only when phosphorylated at Y326.
Antibody Type	Primary antibody
Immunogen	KLH-conjugated synthetic phosphopeptide corresponding to residues surrounding Y326 of human AKT protein. The exact sequence is proprietary.
Purification	The antibody was purified by immunogen affinity chromatography.
Molecular Weight	Predicted: 55 kD; Observed: 60 kD
Form/Buffer	Liquid in 0.42% Potassium phosphate, 0.87% Sodium chloride, pH 7.3, 30% glycerol, and 0.01% sodium azide.
Alternative Names	PKB; RAC; RAC-alpha serine/threonine-protein kinase; Protein kinase B; PKB; Protein kinase B alpha; PKB alpha; Proto-oncogene c-Akt; RAC-PK-alpha
Gene Symbol	AKT1
Entrez Gene	207(Human); 11651(Mouse); 24185(Rat)
SwissProt	P31749(Human); P31750(Mouse); P47196(Rat)

*AREX continuously optimizes our products. Webpage content may not reflect the latest updates. For inquiries, please contact info@arexbio.com or your local distributor.

*Clone Number, Reactivity, Source/Host and Clonality can be found in the product name and Key Features section above.

DATASHEET**AKT (Phospho-Y326) Rabbit Polyclonal Antibody**

CAT. NO. APA11995

DATA

Western blot analysis of AKT (Phospho-Y326) expression in HEK293T (A), mouse liver (B) whole cell lysates. (Predicted band size: 55 kD; Observed band size: 60 kD)

STORAGE

Store at 4°C short term. For long term storage, store at -20°C, avoiding freeze/thaw cycles.

NOTE

For Research Use Only. Not for diagnostic, therapeutics, prophylactic or in vivo use.