

DATASHEET

MKK1 (Phospho-T386) Rabbit Polyclonal Antibody

CAT. NO. APA11998

KEY FEATURES

Target	MKK1 (Phospho-T386)	Source / Host	Rabbit
Reactivity	Human, Mouse, Rat, Rabbit	Clonality	Polyclonal
Applications	WB	Conjugation	Unconjugated
Form / Buffer	Liquid in 0.42% Potassium phosphate, 0.87% Sodium chloride, pH 7.3, 30% glycerol, and 0.01% sodium azide.	Storage	at-20°C

BACKGROUND

Dual specificity protein kinase which acts as an essential component of the MAP kinase signal transduction pathway. Binding of extracellular ligands such as growth factors, cytokines and hormones to their cell-surface receptors activates RAS and this initiates RAF1 activation. RAF1 then further activates the dual-specificity protein kinases MAP2K1/MEK1 and MAP2K2/MEK2. Both MAP2K1/MEK1 and MAP2K2/MEK2 function specifically in the MAPK/ERK cascade, and catalyze the concomitant phosphorylation of a threonine and a tyrosine residue in a Thr-Glu-Tyr sequence located in the extracellular signal-regulated kinases MAPK3/ERK1 and MAPK1/ERK2, leading to their activation and further transduction of the signal within the MAPK/ERK cascade.

APPLICATION

To ensure optimal assay performance, AREX recommends conducting reagent titration tailored to each testing system for optimal detection results.

WB	1:500 - 1:1000
----	----------------

*Results are sample-specific. Please refer to your local assay conditions and test parameters for reference.

PRODUCT OVERVIEW

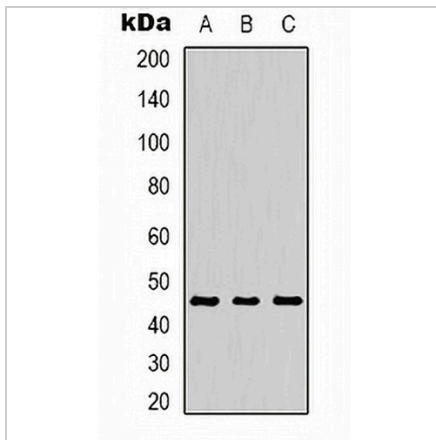
Description	Rabbit polyclonal antibody to MKK1 (Phospho-T386)
Specificity	Recognizes endogenous levels of MKK1 protein only when phosphorylated at T386.
Antibody Type	Primary antibody
Immunogen	KLH-conjugated synthetic phosphopeptide corresponding to residues surrounding T386 of human MKK1 protein. The exact sequence is proprietary.
Purification	The antibody was purified by immunogen affinity chromatography.
Molecular Weight	Predicted: 43 kD; Observed: 45 kD
Form/Buffer	Liquid in 0.42% Potassium phosphate, 0.87% Sodium chloride, pH 7.3, 30% glycerol, and 0.01% sodium azide.
Alternative Names	MEK1; PRKMK1; Dual specificity mitogen-activated protein kinase kinase 1; MAP kinase kinase 1; MAPKK 1; MKK1; ERK activator kinase 1; MAPK/ERK kinase 1; MEK 1
Gene Symbol	MAP2K1
Entrez Gene	5604(Human); 26395(Mouse); 170851(Rat)
SwissProt	Q02750(Human); P31938(Mouse); Q01986(Rat)

*AREX continuously optimizes our products. Webpage content may not reflect the latest updates. For inquiries, please contact info@arexbio.com or your local distributor.

*Clone Number, Reactivity, Source/Host and Clonality can be found in the product name and Key Features section above.

DATASHEET**MKK1 (Phospho-T386) Rabbit Polyclonal Antibody**

CAT. NO. APA11998

DATA

Western blot analysis of MKK1 (Phospho-T386) expression in HEK293T (A), NIH3T3 (B), Raw264.7 (C) whole cell lysates. (Predicted band size: 43 kD; Observed band size: 45 kD)

STORAGE

Store at 4°C short term. For long term storage, store at -20°C, avoiding freeze/thaw cycles.

NOTE

For Research Use Only. Not for diagnostic, therapeutics, prophylactic or in vivo use.