

## DATASHEET

# PKC epsilon Rabbit Polyclonal Antibody

CAT. NO. APA12004

### KEY FEATURES

Target	PKC epsilon	Source / Host	Rabbit
Reactivity	Human, Mouse, Rat, Rabbit	Clonality	Polyclonal
Applications	WB	Conjugation	Unconjugated
Form / Buffer	Liquid in 0.42% Potassium phosphate, 0.87% Sodium chloride, pH 7.3, 30% glycerol, and 0.01% sodium azide.		Storage at-20°C

### BACKGROUND

Calcium-independent, phospholipid- and diacylglycerol (DAG)-dependent serine/threonine-protein kinase that plays essential roles in the regulation of multiple cellular processes linked to cytoskeletal proteins, such as cell adhesion, motility, migration and cell cycle, functions in neuron growth and ion channel regulation, and is involved in immune response, cancer cell invasion and regulation of apoptosis. Mediates cell adhesion to the extracellular matrix via integrin-dependent signaling, by mediating angiotensin-2-induced activation of integrin beta-1 (ITGB1) in cardiac fibroblasts. Phosphorylates MARCKS, which phosphorylates and activates PTK2/FAK, leading to the spread of cardiomyocytes.

### APPLICATION

To ensure optimal assay performance, AREX recommends conducting reagent titration tailored to each testing system for optimal detection results.

WB	1:500 - 1:1000
----	----------------

\*Results are sample-specific. Please refer to your local assay conditions and test parameters for reference.

### PRODUCT OVERVIEW

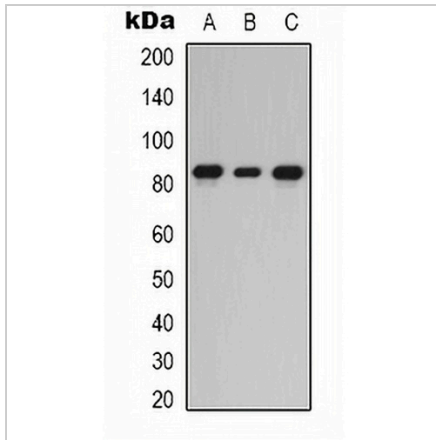
Description	Rabbit polyclonal antibody to PKC epsilon
Specificity	Recognizes endogenous levels of PKC epsilon protein.
Antibody Type	Primary antibody
Immunogen	KLH-conjugated synthetic peptide encompassing a sequence within the C-term region of human PKC epsilon. The exact sequence is proprietary.
Purification	The antibody was purified by immunogen affinity chromatography.
Molecular Weight	Predicted: 83 kD; Observed: 82 kD
Form/Buffer	Liquid in 0.42% Potassium phosphate, 0.87% Sodium chloride, pH 7.3, 30% glycerol, and 0.01% sodium azide.
Alternative Names	PKCE; Protein kinase C epsilon type; nPKC-epsilon
Gene Symbol	PRKCE
Entrez Gene	5581(Human); 18754(Mouse); 29340(Rat)
SwissProt	Q02156(Human); P16054(Mouse); P09216(Rat)

\*AREX continuously optimizes our products. Webpage content may not reflect the latest updates. For inquiries, please contact [info@arexbio.com](mailto:info@arexbio.com) or your local distributor.

\*Clone Number, Reactivity, Source/Host and Clonality can be found in the product name and Key Features section above.

**DATASHEET****PKC epsilon Rabbit Polyclonal Antibody**

CAT. NO. APA12004

**DATA**

Western blot analysis of PKC epsilon expression in HEK293T (A), HeLa (B), HepG2 (C) whole cell lysates. (Predicted band size: 83 kD; Observed band size: 82 kD)

**STORAGE**

Store at 4°C short term. For long term storage, store at -20°C, avoiding freeze/thaw cycles.

**NOTE**

For Research Use Only. Not for diagnostic, therapeutics, prophylactic or in vivo use.