

DATASHEET

PITX1 Rabbit Polyclonal Antibody

CAT. NO. APA12028

KEY FEATURES

Target	PITX1	Source / Host	Rabbit
Reactivity	Human, Mouse, Rat, Chicken	Clonality	Polyclonal
Applications	WB, IHC	Conjugation	Unconjugated
Form / Buffer	Liquid in 0.42% Potassium phosphate, 0.87% Sodium chloride, pH 7.3, 30% glycerol, and 0.01% sodium azide.		Storage at -20°C

BACKGROUND

Sequence-specific transcription factor that binds gene promoters and activates their transcription. May play a role in the development of anterior structures, and in particular, the brain and facies and in specifying the identity or structure of hindlimb.

APPLICATION

To ensure optimal assay performance, AREX recommends conducting reagent titration tailored to each testing system for optimal detection results.

WB	1:500 - 1:1000
IHC	1:100 - 1:200

*Results are sample-specific. Please refer to your local assay conditions and test parameters for reference.

PRODUCT OVERVIEW

Description	Rabbit polyclonal antibody to PITX1
Specificity	Recognizes endogenous levels of PITX1 protein.
Antibody Type	Primary antibody
Immunogen	KLH-conjugated synthetic peptide encompassing a sequence within the center region of human PITX1. The exact sequence is proprietary.
Purification	The antibody was purified by immunogen affinity chromatography.
Molecular Weight	Predicted: 34 kD; Observed: 34 kD
Form/Buffer	Liquid in 0.42% Potassium phosphate, 0.87% Sodium chloride, pH 7.3, 30% glycerol, and 0.01% sodium azide.
Alternative Names	BFT; PTX1; Pituitary homeobox 1; Hindlimb-expressed homeobox protein backfoot; Homeobox protein PITX1; Paired-like homeodomain transcription factor 1
Gene Symbol	PITX1
Entrez Gene	5307(Human); 18740(Mouse); 113983(Rat)
SwissProt	P78337(Human); P70314(Mouse); Q99NA7(Rat)

*AREX continuously optimizes our products. Webpage content may not reflect the latest updates. For inquiries, please contact info@arexbio.com or your local distributor.

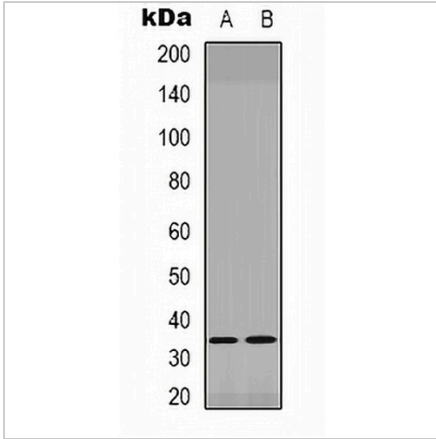
*Clone Number, Reactivity, Source/Host and Clonality can be found in the product name and Key Features section above.

DATASHEET

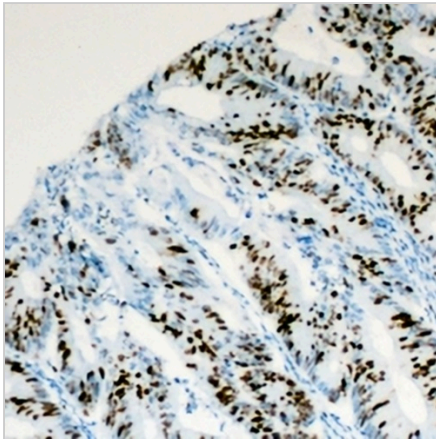
PITX1 Rabbit Polyclonal Antibody

CAT. NO. APA12028

DATA



Western blot analysis of PITX1 expression in Jurkat (A), NIH3T3 (B) whole cell lysates. (Predicted band size: 34 kD; Observed band size: 34 kD)



Immunohistochemical analysis of PITX1 staining in human colon cancer formalin fixed paraffin embedded tissue section. The section was pre-treated using heat mediated antigen retrieval with sodium citrate buffer (pH 6.0). The section was then incubated with the antibody at room temperature and detected using an HRP conjugated compact polymer system. DAB was used as the chromogen. The section was then counterstained with haematoxylin and mounted with DPX.

STORAGE

Store at 4°C short term. For long term storage, store at -20°C, avoiding freeze/thaw cycles.

NOTE

For Research Use Only. Not for diagnostic, therapeutics, prophylactic or in vivo use.