

DATASHEET

B3GALTL Rabbit Polyclonal Antibody

CAT. NO. APA12040

KEY FEATURES

Target	B3GALTL	Source / Host	Rabbit
Reactivity	Human	Clonality	Polyclonal
Applications	WB, IHC	Conjugation	Unconjugated
Form / Buffer	Liquid in 0.42% Potassium phosphate, 0.87% Sodium chloride, pH 7.3, 30% glycerol, and 0.01% sodium azide.		Storage at -20°C

BACKGROUND

Beta-1,3-glucosyltransferase involved in one of the two pathways responsible for protein O-linked fucosylation, a unique post-translational modification of cysteine-knotted proteins that regulates various biological processes. This pathway targets proteins with Thrombospondin type-1 (TSP1) repeats (TSR) in the endoplasmic reticulum. It starts with POFUT2, which attaches fucose via an O-glycosidic bond to a conserved serine or threonine residue. B3GLCT extends this modification by transferring a glucose molecule from UDP-glucose to the fucose.

APPLICATION

To ensure optimal assay performance, AREX recommends conducting reagent titration tailored to each testing system for optimal detection results.

WB	1:500 - 1:1000
IHC	1:100 - 1:200

*Results are sample-specific. Please refer to your local assay conditions and test parameters for reference.

PRODUCT OVERVIEW

Description	Rabbit polyclonal antibody to B3GALTL
Specificity	Recognizes endogenous levels of B3GALTL protein.
Antibody Type	Primary antibody
Immunogen	KLH-conjugated synthetic peptide encompassing a sequence within the C-term region of human B3GALTL. The exact sequence is proprietary.
Purification	The antibody was purified by immunogen affinity chromatography.
Molecular Weight	Predicted: 56 kD; Observed: 57 kD
Form/Buffer	Liquid in 0.42% Potassium phosphate, 0.87% Sodium chloride, pH 7.3, 30% glycerol, and 0.01% sodium azide.
Alternative Names	B3GTL; Beta-1,3-glucosyltransferase; Beta3Glc-T; Beta-3-glycosyltransferase-like
Gene Symbol	B3GALTL
Entrez Gene	145173(Human)
SwissProt	Q6Y288(Human)

*AREX continuously optimizes our products. Webpage content may not reflect the latest updates. For inquiries, please contact info@arexbio.com or your local distributor.

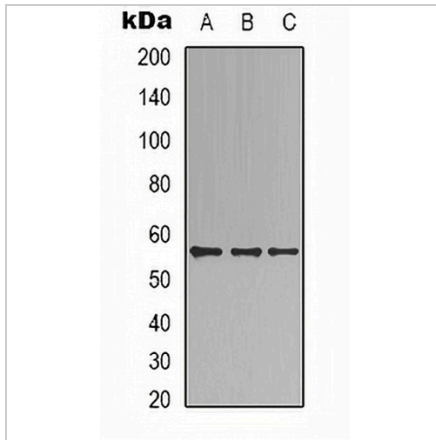
*Clone Number, Reactivity, Source/Host and Clonality can be found in the product name and Key Features section above.

DATASHEET

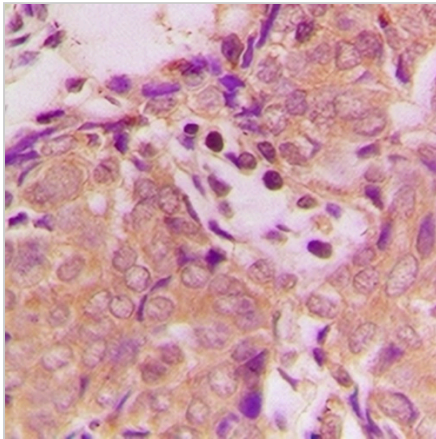
B3GALTL Rabbit Polyclonal Antibody

CAT. NO. APA12040

DATA



Western blot analysis of B3GALTL expression in HEK293T (A), MCF7 (B), HepG2 (C) whole cell lysates. (Predicted band size: 56 kD; Observed band size: 57 kD)



Immunohistochemical analysis of B3GALTL staining in human breast cancer formalin fixed paraffin embedded tissue section. The section was pre-treated using heat mediated antigen retrieval with sodium citrate buffer (pH 6.0). The section was then incubated with the antibody at room temperature and detected using an HRP conjugated compact polymer system. DAB was used as the chromogen. The section was then counterstained with haematoxylin and mounted with DPX.

STORAGE

Store at 4°C short term. For long term storage, store at -20°C, avoiding freeze/thaw cycles.

NOTE

For Research Use Only. Not for diagnostic, therapeutics, prophylactic or in vivo use.