

DATASHEET

BSX Rabbit Polyclonal Antibody

CAT. NO. APA12041

KEY FEATURES

Target	BSX	Source / Host	Rabbit
Reactivity	Human, Mouse, Rat	Clonality	Polyclonal
Applications	WB	Conjugation	Unconjugated
Form / Buffer	Liquid in 0.42% Potassium phosphate, 0.87% Sodium chloride, pH 7.3, 30% glycerol, and 0.01% sodium azide.		Storage at-20°C

BACKGROUND

DNA binding protein that function as transcriptional activator. Is essential for normal postnatal growth and nursing. Is an essential factor for neuronal neuropeptide Y and agouti-related peptide function and locomotory behavior in the control of energy balance .

APPLICATION

To ensure optimal assay performance, AREX recommends conducting reagent titration tailored to each testing system for optimal detection results.

WB	1:500 - 1:1000
----	----------------

*Results are sample-specific. Please refer to your local assay conditions and test parameters for reference.

PRODUCT OVERVIEW

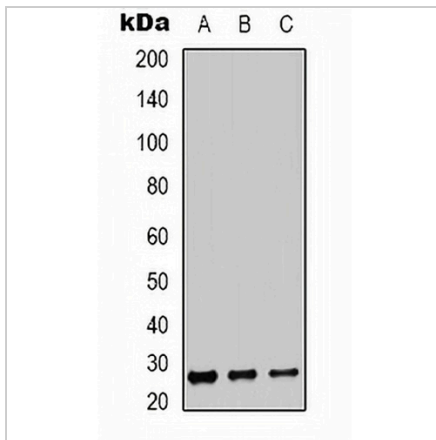
Description	Rabbit polyclonal antibody to BSX
Specificity	Recognizes endogenous levels of BSX protein.
Antibody Type	Primary antibody
Immunogen	KLH-conjugated synthetic peptide encompassing a sequence within the C-term region of human BSX. The exact sequence is proprietary.
Purification	The antibody was purified by immunogen affinity chromatography.
Molecular Weight	Predicted: 25 kD; Observed: 26 kD
Form/Buffer	Liquid in 0.42% Potassium phosphate, 0.87% Sodium chloride, pH 7.3, 30% glycerol, and 0.01% sodium azide.
Alternative Names	BSX1; Brain-specific homeobox protein homolog
Gene Symbol	BSX
Entrez Gene	390259(Human); 244813(Mouse)
SwissProt	Q3C1V8(Human); Q810B3(Mouse)

*AREX continuously optimizes our products. Webpage content may not reflect the latest updates. For inquiries, please contact info@arexbio.com or your local distributor.

*Clone Number, Reactivity, Source/Host and Clonality can be found in the product name and Key Features section above.

DATASHEET**BSX Rabbit Polyclonal Antibody**

CAT. NO. APA12041

DATA

Western blot analysis of BSX expression in HEK293T (A), SHSY5Y (B), Rat muscle (C) whole cell lysates. (Predicted band size: 25 kD; Observed band size: 26 kD)

STORAGE

Store at 4°C short term. For long term storage, store at -20°C, avoiding freeze/thaw cycles.

NOTE

For Research Use Only. Not for diagnostic, therapeutics, prophylactic or in vivo use.