

DATASHEET

Carbonic Anhydrase 12 Rabbit Polyclonal Antibody

CAT. NO. APA12042

KEY FEATURES

Target	Carbonic Anhydrase 12	Source / Host	Rabbit
Reactivity	Human, Mouse	Clonality	Polyclonal
Applications	WB	Conjugation	Unconjugated
Form / Buffer	Liquid in 0.42% Potassium phosphate, 0.87% Sodium chloride, pH 7.3, 30% glycerol, and 0.01% sodium azide.	Storage	at-20°C

BACKGROUND

Reversible hydration of carbon dioxide.

APPLICATION

To ensure optimal assay performance, AREX recommends conducting reagent titration tailored to each testing system for optimal detection results.

WB	1:500 - 1:1000
----	----------------

*Results are sample-specific. Please refer to your local assay conditions and test parameters for reference.

PRODUCT OVERVIEW

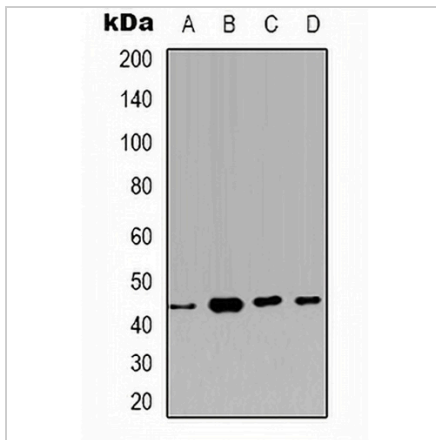
Description	Rabbit polyclonal antibody to Carbonic Anhydrase 12
Specificity	Recognizes endogenous levels of Carbonic Anhydrase 12 protein.
Antibody Type	Primary antibody
Immunogen	KLH-conjugated synthetic peptide encompassing a sequence within the center region of human Carbonic Anhydrase 12. The exact sequence is proprietary.
Purification	The antibody was purified by immunogen affinity chromatography.
Molecular Weight	Predicted: 39 kD; Observed: 43 kD
Form/Buffer	Liquid in 0.42% Potassium phosphate, 0.87% Sodium chloride, pH 7.3, 30% glycerol, and 0.01% sodium azide.
Alternative Names	Carbonic anhydrase 12; Carbonate dehydratase XII; Carbonic anhydrase XII; CA-XII; Tumor antigen HOM-RCC-3.1.3
Gene Symbol	CA12
Entrez Gene	771(Human); 76459(Mouse)
SwissProt	O43570(Human); Q8CI85(Mouse)

*AREX continuously optimizes our products. Webpage content may not reflect the latest updates. For inquiries, please contact info@arexbio.com or your local distributor.

*Clone Number, Reactivity, Source/Host and Clonality can be found in the product name and Key Features section above.

DATASHEET**Carbonic Anhydrase 12 Rabbit Polyclonal Antibody**

CAT. NO. APA12042

DATA

Western blot analysis of Carbonic Anhydrase 12 expression in HEK293T (A), PC3 (B), MCF7 (C), NIH3T3 (D) whole cell lysates. (Predicted band size: 39 kD; Observed band size: 43 kD)

STORAGE

Store at 4°C short term. For long term storage, store at -20°C, avoiding freeze/thaw cycles.

NOTE

For Research Use Only. Not for diagnostic, therapeutics, prophylactic or in vivo use.