

**DATASHEET**

**GRAP2 Rabbit Polyclonal Antibody**

CAT. NO. APA12045

**KEY FEATURES**

Target	GRAP2	Source / Host	Rabbit
Reactivity	Human	Clonality	Polyclonal
Applications	WB	Conjugation	Unconjugated
Form / Buffer	Liquid in 0.42% Potassium phosphate, 0.87% Sodium chloride, pH 7.3, 30% glycerol, and 0.01% sodium azide.		Storage at-20°C

**BACKGROUND**

Interacts with SLP-76 to regulate NF-AT activation. Binds to tyrosine-phosphorylated shc.

**APPLICATION**

To ensure optimal assay performance, AREX recommends conducting reagent titration tailored to each testing system for optimal detection results.

WB	1:500 - 1:1000
----	----------------

\*Results are sample-specific. Please refer to your local assay conditions and test parameters for reference.

**PRODUCT OVERVIEW**

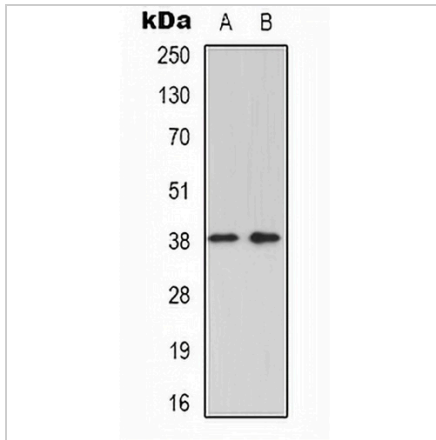
Description	Rabbit polyclonal antibody to GRAP2
Specificity	Recognizes endogenous levels of GRAP2 protein.
Antibody Type	Primary antibody
Immunogen	KLH-conjugated synthetic peptide encompassing a sequence within the center region of human GRAP2. The exact sequence is proprietary.
Purification	The antibody was purified by immunogen affinity chromatography.
Molecular Weight	Predicted: 37 kD; Observed: 38 kD
Form/Buffer	Liquid in 0.42% Potassium phosphate, 0.87% Sodium chloride, pH 7.3, 30% glycerol, and 0.01% sodium azide.
Alternative Names	GADS; GRB2L; GRID; GRB2-related adapter protein 2; Adapter protein GRID; GRB-2-like protein; GRB2L; GRBLG; GRBX; Grf40 adapter protein; Grf-40; Growth factor receptor-binding protein; Hematopoietic cell-associated adapter protein GrpL; P38; Protein GADS; SH3-SH2-SH3 adapter Mona
Gene Symbol	GRAP2
Entrez Gene	9402(Human)
SwissProt	O75791(Human)

\*AREX continuously optimizes our products. Webpage content may not reflect the latest updates. For inquiries, please contact [info@arexbio.com](mailto:info@arexbio.com) or your local distributor.

\*Clone Number, Reactivity, Source/Host and Clonality can be found in the product name and Key Features section above.

**DATASHEET****GRAP2 Rabbit Polyclonal Antibody**

CAT. NO. APA12045

**DATA**

Western blot analysis of GRAP2 expression in K562 (A), Jurkat (B) whole cell lysates. (Predicted band size: 37 kD; Observed band size: 38 kD)

**STORAGE**

Store at 4°C short term. For long term storage, store at -20°C, avoiding freeze/thaw cycles.

**NOTE**

For Research Use Only. Not for diagnostic, therapeutics, prophylactic or in vivo use.