

DATASHEET

ZDHHC20 Rabbit Polyclonal Antibody

CAT. NO. APA12053

KEY FEATURES

Target	ZDHHC20	Source / Host	Rabbit
Reactivity	Human, Bovine	Clonality	Polyclonal
Applications	WB	Conjugation	Unconjugated
Form / Buffer	Liquid in 0.42% Potassium phosphate, 0.87% Sodium chloride, pH 7.3, 30% glycerol, and 0.01% sodium azide.		Storage at -20°C

BACKGROUND

Palmitoyltransferase that could catalyze the addition of palmitate onto various protein substrates . Catalyzes palmitoylation of Cys residues in the cytoplasmic C-terminus of EGFR, and modulates the duration of EGFR signaling by modulating palmitoylation-dependent EGFR internalization and degradation . Has a preference for acyl-CoA with C16 fatty acid chains . Can also utilize acyl-CoA with C14 and C18 fatty acid chains . May palmitoylate CALHM1 subunit of gustatory voltage-gated ion channels and modulate channel gating and kinetics.

APPLICATION

To ensure optimal assay performance, AREX recommends conducting reagent titration tailored to each testing system for optimal detection results.

WB	1:500 - 1:1000
----	----------------

*Results are sample-specific. Please refer to your local assay conditions and test parameters for reference.

PRODUCT OVERVIEW

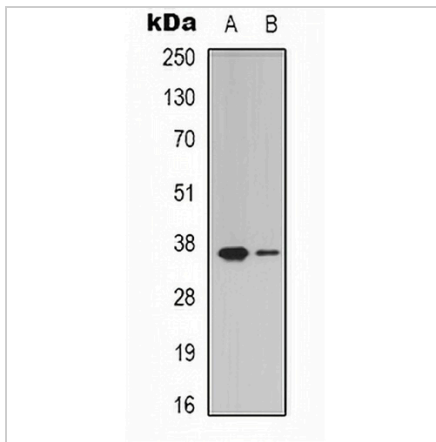
Description	Rabbit polyclonal antibody to ZDHHC20
Specificity	Recognizes endogenous levels of ZDHHC20 protein.
Antibody Type	Primary antibody
Immunogen	KLH-conjugated synthetic peptide encompassing a sequence within the center region of human ZDHHC20. The exact sequence is proprietary.
Purification	The antibody was purified by immunogen affinity chromatography.
Molecular Weight	Predicted: 42 kD; Observed: 37 kD
Form/Buffer	Liquid in 0.42% Potassium phosphate, 0.87% Sodium chloride, pH 7.3, 30% glycerol, and 0.01% sodium azide.
Alternative Names	Probable palmitoyltransferase ZDHHC20; Zinc finger DHHC domain-containing protein 20; DHHC-20
Gene Symbol	ZDHHC20
Entrez Gene	253832(Human)
SwissProt	Q5W0Z9(Human)

*AREX continuously optimizes our products. Webpage content may not reflect the latest updates. For inquiries, please contact info@arexbio.com or your local distributor.

*Clone Number, Reactivity, Source/Host and Clonality can be found in the product name and Key Features section above.

DATASHEET**ZDHHC20 Rabbit Polyclonal Antibody**

CAT. NO. APA12053

DATA

Western blot analysis of ZDHHC20 expression in MCF7 (A), HepG2 (B) whole cell lysates. (Predicted band size: 42 kD; Observed band size: 37 kD)

STORAGE

Store at 4°C short term. For long term storage, store at -20°C, avoiding freeze/thaw cycles.

NOTE

For Research Use Only. Not for diagnostic, therapeutics, prophylactic or in vivo use.