

DATASHEET

POTEB Rabbit Polyclonal Antibody

CAT. NO. APA12054

KEY FEATURES

Target	POTEB	Source / Host	Rabbit
Reactivity	Human, Mouse	Clonality	Polyclonal
Applications	WB, IHC	Conjugation	Unconjugated
Form / Buffer	Liquid in 0.42% Potassium phosphate, 0.87% Sodium chloride, pH 7.3, 30% glycerol, and 0.01% sodium azide.		Storage at -20°C

BACKGROUND

POTE ankyrin domain family member B3. Also known as: POTE ankyrin domain family member B3; ANKRD26-like family B member 1; POTE ankyrin domain family, member B-like; prostate, ovary, testis-expressed protein on chromosome 15.

APPLICATION

To ensure optimal assay performance, AREX recommends conducting reagent titration tailored to each testing system for optimal detection results.

WB	1:500 - 1:1000
IHC	1:100 - 1:200

*Results are sample-specific. Please refer to your local assay conditions and test parameters for reference.

PRODUCT OVERVIEW

Description	Rabbit polyclonal antibody to POTEB
Specificity	Recognizes endogenous levels of POTEB protein.
Antibody Type	Primary antibody
Immunogen	KLH-conjugated synthetic peptide encompassing a sequence within the C-term region of human POTEB. The exact sequence is proprietary.
Purification	The antibody was purified by immunogen affinity chromatography.
Molecular Weight	Predicted: 65 kD; Observed: 60 kD
Form/Buffer	Liquid in 0.42% Potassium phosphate, 0.87% Sodium chloride, pH 7.3, 30% glycerol, and 0.01% sodium azide.
Alternative Names	A26B1; POTE15; POTE ankyrin domain family member B; ANKRD26-like family B member 1; Prostate, ovary, testis-expressed protein on chromosome 15; POTE-15
Gene Symbol	POTEB
Entrez Gene	102724631(Human)
SwissProt	Q6S5H4(Human)

*AREX continuously optimizes our products. Webpage content may not reflect the latest updates. For inquiries, please contact info@arexbio.com or your local distributor.

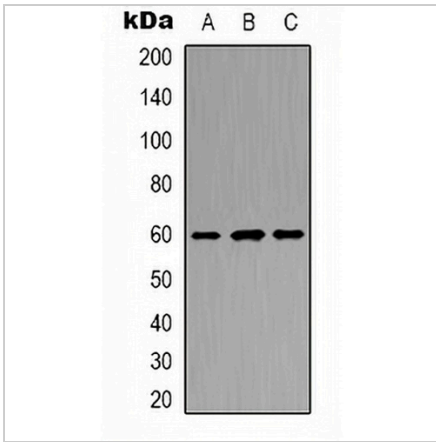
*Clone Number, Reactivity, Source/Host and Clonality can be found in the product name and Key Features section above.

DATASHEET

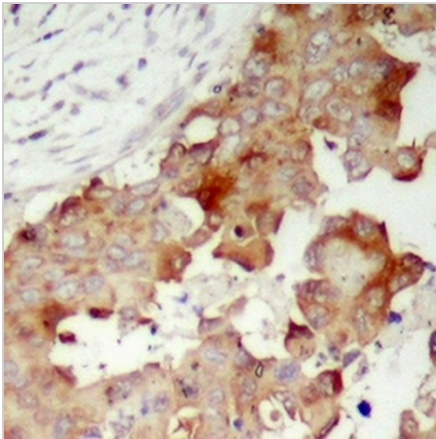
POTEB Rabbit Polyclonal Antibody

CAT. NO. APA12054

DATA



Western blot analysis of POTEB expression in Jurkat (A), mouse kidney (B), NIH3T3 (C) whole cell lysates. (Predicted band size: 65 kD; Observed band size: 60 kD)



Immunohistochemical analysis of POTEB staining in human prostate cancer formalin fixed paraffin embedded tissue section. The section was pre-treated using heat mediated antigen retrieval with sodium citrate buffer (pH 6.0). The section was then incubated with the antibody at room temperature and detected using an HRP conjugated compact polymer system. DAB was used as the chromogen. The section was then counterstained with haematoxylin and mounted with DPX.

STORAGE

Store at 4°C short term. For long term storage, store at -20°C, avoiding freeze/thaw cycles.

NOTE

For Research Use Only. Not for diagnostic, therapeutics, prophylactic or in vivo use.