

DATASHEET

FAT10 Rabbit Polyclonal Antibody

CAT. NO. APA12063

KEY FEATURES

Target	FAT10	Source / Host	Rabbit
Reactivity	Human, Mouse	Clonality	Polyclonal
Applications	WB, IHC	Conjugation	Unconjugated
Form / Buffer	Liquid in 0.42% Potassium phosphate, 0.87% Sodium chloride, pH 7.3, 30% glycerol, and 0.01% sodium azide.		Storage at -20°C

BACKGROUND

Ubiquitin-like protein modifier which can be covalently attached to target proteins and subsequently leads to their degradation by the 26S proteasome, in a NUB1-dependent manner. Conjugation to the target protein is activated by UBA6 via adenylation of its C-terminal glycine. Promotes the expression of the proteasome subunit beta type-9 (PSMB9/LMP2). Regulates TNF-induced and LPS-mediated activation of the central mediator of innate immunity NF-kappa-B by promoting TNF-mediated proteasomal degradation of ubiquitinated-I-kappa-B-alpha. Required for TNF-induced p65 nuclear translocation in renal tubular epithelial cells (RTECs).

APPLICATION

To ensure optimal assay performance, AREX recommends conducting reagent titration tailored to each testing system for optimal detection results.

WB	1:500 - 1:1000
IHC	1:50 - 1:200

*Results are sample-specific. Please refer to your local assay conditions and test parameters for reference.

PRODUCT OVERVIEW

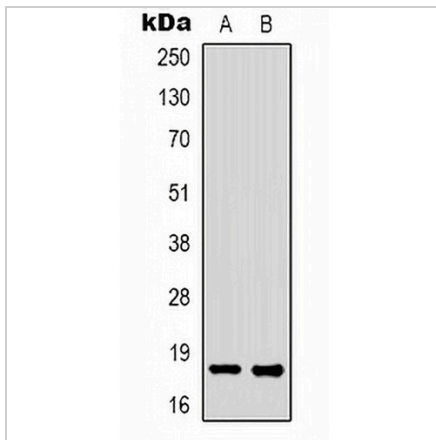
Description	Rabbit polyclonal antibody to FAT10
Specificity	Recognizes endogenous levels of FAT10 protein.
Antibody Type	Primary antibody
Immunogen	KLH-conjugated synthetic peptide encompassing a sequence within the center region of human FAT10. The exact sequence is proprietary.
Purification	The antibody was purified by immunogen affinity chromatography.
Molecular Weight	Predicted: 18 kD; Observed: 18 kD
Form/Buffer	Liquid in 0.42% Potassium phosphate, 0.87% Sodium chloride, pH 7.3, 30% glycerol, and 0.01% sodium azide.
Alternative Names	FAT10; Ubiquitin D; Diubiquitin; Ubiquitin-like protein FAT10
Gene Symbol	UBD
Entrez Gene	10537(Human)
SwissProt	O15205(Human)

*AREX continuously optimizes our products. Webpage content may not reflect the latest updates. For inquiries, please contact info@arex.bio or your local distributor.

*Clone Number, Reactivity, Source/Host and Clonality can be found in the product name and Key Features section above.

DATASHEET**FAT10 Rabbit Polyclonal Antibody**

CAT. NO. APA12063

DATA

Western blot analysis of FAT10 expression in K562 (A), HEK293T (B) whole cell lysates. (Predicted band size: 18 kD; Observed band size: 18 kD)

STORAGE

Store at 4°C short term. For long term storage, store at -20°C, avoiding freeze/thaw cycles.

NOTE

For Research Use Only. Not for diagnostic, therapeutics, prophylactic or in vivo use.