

DATASHEET

Cortactin Rabbit Polyclonal Antibody

CAT. NO. APA12067

KEY FEATURES

Target	Cortactin	Source / Host	Rabbit
Reactivity	Human, Mouse, Rat, Chicken	Clonality	Polyclonal
Applications	WB	Conjugation	Unconjugated
Form / Buffer	Liquid in 0.42% Potassium phosphate, 0.87% Sodium chloride, pH 7.3, 30% glycerol, and 0.01% sodium azide.	Storage	at-20°C

BACKGROUND

Contributes to the organization of the actin cytoskeleton and cell shape . Plays a role in the formation of lamellipodia and in cell migration. Plays a role in the regulation of neuron morphology, axon growth and formation of neuronal growth cones . Through its interaction with CTTNBP2, involved in the regulation of neuronal spine density . Plays a role in focal adhesion assembly and turnover . In complex with ABL1 and MYLK regulates cortical actin-based cytoskeletal rearrangement critical to sphingosine 1-phosphate (S1P)-mediated endothelial cell (EC) barrier enhancement . Plays a role in intracellular protein transport and endocytosis, and in modulating the levels of potassium channels present at the cell membrane .

APPLICATION

To ensure optimal assay performance, AREX recommends conducting reagent titration tailored to each testing system for optimal detection results.

WB	1:500 - 1:1000
----	----------------

*Results are sample-specific. Please refer to your local assay conditions and test parameters for reference.

PRODUCT OVERVIEW

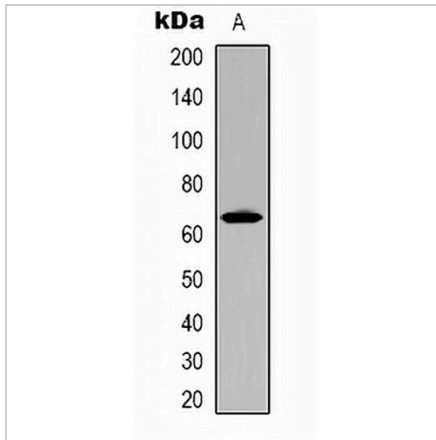
Description	Rabbit polyclonal antibody to Cortactin
Specificity	Recognizes endogenous levels of Cortactin protein.
Antibody Type	Primary antibody
Immunogen	KLH-conjugated synthetic peptide encompassing a sequence within the center region of human Cortactin. The exact sequence is proprietary.
Purification	The antibody was purified by immunogen affinity chromatography.
Molecular Weight	Predicted: 61 kD; Observed: 61 kD
Form/Buffer	Liquid in 0.42% Potassium phosphate, 0.87% Sodium chloride, pH 7.3, 30% glycerol, and 0.01% sodium azide.
Alternative Names	EMS1; Src substrate cortactin; Amplaxin; Oncogene EMS1
Gene Symbol	CTTN
Entrez Gene	2017(Human); 13043(Mouse)
SwissProt	Q14247(Human); Q60598(Mouse)

*AREX continuously optimizes our products. Webpage content may not reflect the latest updates. For inquiries, please contact info@arexbio.com or your local distributor.

*Clone Number, Reactivity, Source/Host and Clonality can be found in the product name and Key Features section above.

DATASHEET**Cortactin Rabbit Polyclonal Antibody**

CAT. NO. APA12067

DATA

Western blot analysis of Cortactin expression in HepG2 (A) whole cell lysates. (Predicted band size: 61 kD; Observed band size: 61 kD)

STORAGE

Store at 4°C short term. For long term storage, store at -20°C, avoiding freeze/thaw cycles.

NOTE

For Research Use Only. Not for diagnostic, therapeutics, prophylactic or in vivo use.