

DATASHEET

NF-kappaB p65 (Acetyl-K218) Rabbit Polyclonal Antibody

CAT. NO. APA12077

KEY FEATURES

| | | | |
|---------------|---|---------------|--------------------|
| Target | NF-kappaB p65 (Acetyl-K218) | Source / Host | Rabbit |
| Reactivity | Human, Mouse | Clonality | Polyclonal |
| Applications | WB | Conjugation | Unconjugated |
| Form / Buffer | Liquid in 0.42% Potassium phosphate, 0.87% Sodium chloride, pH 7.3, 30% glycerol, and 0.01% sodium azide. | | Storage at-20°C |

BACKGROUND

NF-kappa-B is a pleiotropic transcription factor present in almost all cell types and is the endpoint of a series of signal transduction events that are initiated by a vast array of stimuli related to many biological processes such as inflammation, immunity, differentiation, cell growth, tumorigenesis and apoptosis. NF-kappa-B is a homo- or heterodimeric complex formed by the Rel-like domain-containing proteins RELA/p65, RELB, NFKB1/p105, NFKB1/p50, REL and NFKB2/p52. The heterodimeric RELA-NFKB1 complex appears to be most abundant one. The dimers bind at kappa-B sites in the DNA of their target genes and the individual dimers have distinct preferences for different kappa-B sites that they can bind with distinguishable affinity and specificity.

APPLICATION

To ensure optimal assay performance, AREX recommends conducting reagent titration tailored to each testing system for optimal detection results.

| | |
|----|----------------|
| WB | 1:500 - 1:1000 |
|----|----------------|

*Results are sample-specific. Please refer to your local assay conditions and test parameters for reference.

PRODUCT OVERVIEW

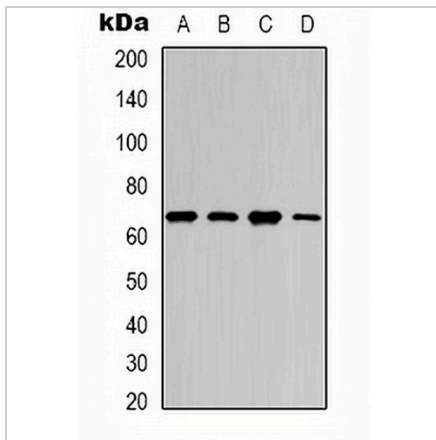
| | |
|-------------------|---|
| Description | Rabbit polyclonal antibody to NF-kappaB p65 (Acetyl-K218) |
| Specificity | Recognizes endogenous levels of NF-kappaB p65 protein only when acetylated at K218. |
| Antibody Type | Primary antibody |
| Immunogen | KLH-conjugated synthetic acetylated peptide corresponding to residues surrounding K218 of human NF-kappaB p65 protein. The exact sequence is proprietary. |
| Purification | The antibody was purified by immunogen affinity chromatography. |
| Molecular Weight | Predicted: 60 kD; Observed: 65 kD |
| Form/Buffer | Liquid in 0.42% Potassium phosphate, 0.87% Sodium chloride, pH 7.3, 30% glycerol, and 0.01% sodium azide. |
| Alternative Names | NFKB3; Transcription factor p65; Nuclear factor NF-kappa-B p65 subunit; Nuclear factor of kappa light polypeptide gene enhancer in B-cells 3 |
| Gene Symbol | RELA |
| Entrez Gene | 5970(Human); 19697(Mouse) |
| SwissProt | Q04206(Human); Q04207(Mouse) |

*AREX continuously optimizes our products. Webpage content may not reflect the latest updates. For inquiries, please contact info@arexbio.com or your local distributor.

*Clone Number, Reactivity, Source/Host and Clonality can be found in the product name and Key Features section above.

DATASHEET**NF-kappaB p65 (Acetyl-K218) Rabbit Polyclonal Antibody**

CAT. NO. APA12077

DATA

Western blot analysis of NF-kappaB p65 (Acetyl-K218) expression in HEK293T (A), SHSY5Y (B), mouse brain (C), mouse spleen (D) whole cell lysates. (Predicted band size: 60 kD; Observed band size: 65 kD)

STORAGE

Store at 4°C short term. For long term storage, store at -20°C, avoiding freeze/thaw cycles.

NOTE

For Research Use Only. Not for diagnostic, therapeutics, prophylactic or in vivo use.