

DATASHEET

STAT3 (Acetyl-K87) Rabbit Polyclonal Antibody

CAT. NO. APA12089

KEY FEATURES

Target	STAT3 (Acetyl-K87)	Source / Host	Rabbit
Reactivity	Human, Mouse, Rat, Bovine, Chicken, Pig	Clonality	Polyclonal
Applications	WB	Conjugation	Unconjugated
Form / Buffer	Liquid in 0.42% Potassium phosphate, 0.87% Sodium chloride, pH 7.3, 30% glycerol, and 0.01% sodium azide.		Storage at -20°C

BACKGROUND

Signal transducer and transcription activator that mediates cellular responses to interleukins, KITLG/SCF, LEP and other growth factors . Once activated, recruits coactivators, such as NCOA1 or MED1, to the promoter region of the target gene . May mediate cellular responses to activated FGFR1, FGFR2, FGFR3 and FGFR4 . Upon activation of IL6ST/gp130 signaling by interleukin-6 (IL6), binds to the IL6-responsive elements identified in the promoters of various acute-phase protein genes . Activated by IL31 through IL31RA .

APPLICATION

To ensure optimal assay performance, AREX recommends conducting reagent titration tailored to each testing system for optimal detection results.

WB	1:500 - 1:1000
----	----------------

*Results are sample-specific. Please refer to your local assay conditions and test parameters for reference.

PRODUCT OVERVIEW

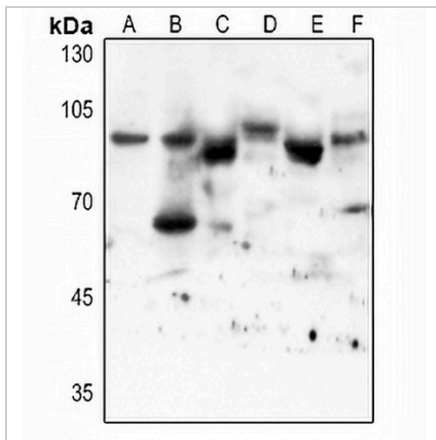
Description	Rabbit polyclonal antibody to STAT3 (Acetyl-K87)
Specificity	Recognizes endogenous levels of STAT3 protein only when acetylated at K87.
Antibody Type	Primary antibody
Immunogen	KLH-conjugated synthetic acetylated peptide corresponding to residues surrounding K87 of human STAT3 protein. The exact sequence is proprietary.
Purification	The antibody was purified by immunogen affinity chromatography.
Molecular Weight	Predicted: 88 kD; Observed: 88 kD
Form/Buffer	Liquid in 0.42% Potassium phosphate, 0.87% Sodium chloride, pH 7.3, 30% glycerol, and 0.01% sodium azide.
Alternative Names	APRF; Signal transducer and activator of transcription 3; Acute-phase response factor
Gene Symbol	STAT3
Entrez Gene	6774(Human); 20848(Mouse); 25125(Rat)
SwissProt	P40763(Human); P42227(Mouse); P52631(Rat)

*AREX continuously optimizes our products. Webpage content may not reflect the latest updates. For inquiries, please contact info@arexbio.com or your local distributor.

*Clone Number, Reactivity, Source/Host and Clonality can be found in the product name and Key Features section above.

DATASHEET**STAT3 (Acetyl-K87) Rabbit Polyclonal Antibody**

CAT. NO. APA12089

DATA

Western blot analysis of STAT3 (Acetyl-K87) expression in Hela (A), H446 (B), mouse lung (C), mouse kidney (D), rat lung (E), rat kidney (F) whole cell lysates. (Predicted band size: 88 kD; Observed band size: 88 kD)

STORAGE

Store at 4°C short term. For long term storage, store at -20°C, avoiding freeze/thaw cycles.

NOTE

For Research Use Only. Not for diagnostic, therapeutics, prophylactic or in vivo use.