

DATASHEET

TAU (Acetyl-K686) Rabbit Polyclonal Antibody

CAT. NO. APA12090

KEY FEATURES

| | | | |
|---------------|---|---------------|--------------|
| Target | TAU (Acetyl-K686) | Source / Host | Rabbit |
| Reactivity | Human, Mouse, Rat, Bovine | Clonality | Polyclonal |
| Applications | WB | Conjugation | Unconjugated |
| Form / Buffer | Liquid in 0.42% Potassium phosphate, 0.87% Sodium chloride, pH 7.3, 30% glycerol, and 0.01% sodium azide. | Storage | at-20°C |

BACKGROUND

Promotes microtubule assembly and stability, and might be involved in the establishment and maintenance of neuronal polarity . The C-terminus binds axonal microtubules while the N-terminus binds neural plasma membrane components, suggesting that tau functions as a linker protein between both . Axonal polarity is predetermined by TAU/MAPT localization (in the neuronal cell) in the domain of the cell body defined by the centrosome. The short isoforms allow plasticity of the cytoskeleton whereas the longer isoforms may preferentially play a role in its stabilization.

APPLICATION

To ensure optimal assay performance, AREX recommends conducting reagent titration tailored to each testing system for optimal detection results.

| | |
|----|----------------|
| WB | 1:500 - 1:1000 |
|----|----------------|

*Results are sample-specific. Please refer to your local assay conditions and test parameters for reference.

PRODUCT OVERVIEW

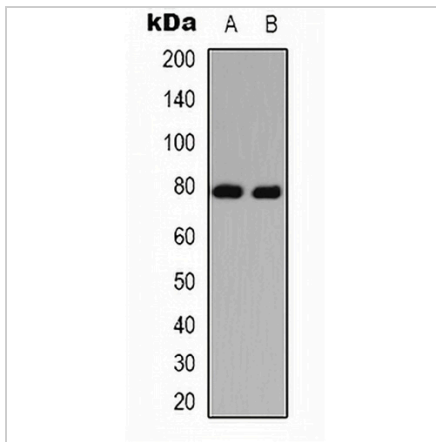
| | |
|-------------------|---|
| Description | Rabbit polyclonal antibody to TAU (Acetyl-K686) |
| Specificity | Recognizes endogenous levels of TAU protein only when acetylated at K686. |
| Antibody Type | Primary antibody |
| Immunogen | KLH-conjugated synthetic acetylated peptide corresponding to residues surrounding K686 of human TAU protein. The exact sequence is proprietary. |
| Purification | The antibody was purified by immunogen affinity chromatography. |
| Molecular Weight | Predicted: 78 kD; Observed: 78 kD |
| Form/Buffer | Liquid in 0.42% Potassium phosphate, 0.87% Sodium chloride, pH 7.3, 30% glycerol, and 0.01% sodium azide. |
| Alternative Names | MAPTL; MTBT1; TAU; Microtubule-associated protein tau; Neurofibrillary tangle protein; Paired helical filament-tau; PHF-tau |
| Gene Symbol | MAPT |
| Entrez Gene | 4137(Human); 17762(Mouse) |
| SwissProt | P10636(Human); P10637(Mouse); P19332(Rat) |

*AREX continuously optimizes our products. Webpage content may not reflect the latest updates. For inquiries, please contact info@arexbio.com or your local distributor.

*Clone Number, Reactivity, Source/Host and Clonality can be found in the product name and Key Features section above.

DATASHEET**TAU (Acetyl-K686) Rabbit Polyclonal Antibody**

CAT. NO. APA12090

DATA

Western blot analysis of TAU (Acetyl-K686) expression in HeLa (A), HEK293T (B) whole cell lysates. (Predicted band size: 78 kD; Observed band size: 78 kD)

STORAGE

Store at 4°C short term. For long term storage, store at -20°C, avoiding freeze/thaw cycles.

NOTE

For Research Use Only. Not for diagnostic, therapeutics, prophylactic or in vivo use.