

**DATASHEET**

**LXR alpha Rabbit Polyclonal Antibody**

CAT. NO. APA12096

**KEY FEATURES**

Target	LXR alpha	Source / Host	Rabbit
Reactivity	Human, Mouse, Rat	Clonality	Polyclonal
Applications	WB	Conjugation	Unconjugated
Form / Buffer	Liquid in 0.42% Potassium phosphate, 0.87% Sodium chloride, pH 7.3, 30% glycerol, and 0.01% sodium azide.		Storage at-20°C

**BACKGROUND**

Nuclear receptor that exhibits a ligand-dependent transcriptional activation activity . Interaction with retinoic acid receptor (RXR) shifts RXR from its role as a silent DNA-binding partner to an active ligand-binding subunit in mediating retinoid responses through target genes defined by LXRES . LXRES are DR4-type response elements characterized by direct repeats of two similar hexanuclotide half-sites spaced by four nucleotides . Plays an important role in the regulation of cholesterol homeostasis, regulating cholesterol uptake through MYLIP-dependent ubiquitination of LDLR, VLDLR and LRP8 . Interplays functionally with RORA for the regulation of genes involved in liver metabolism .

**APPLICATION**

To ensure optimal assay performance, AREX recommends conducting reagent titration tailored to each testing system for optimal detection results.

WB	1:500 - 1:1000
----	----------------

\*Results are sample-specific. Please refer to your local assay conditions and test parameters for reference.

**PRODUCT OVERVIEW**

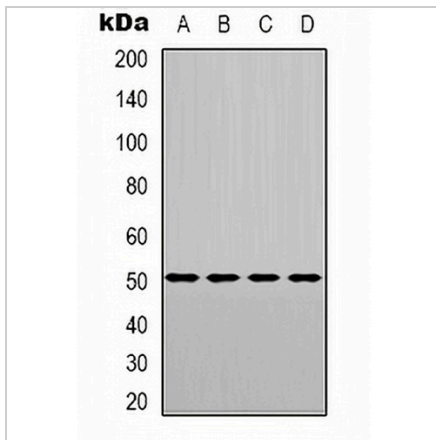
Description	Rabbit polyclonal antibody to LXR alpha
Specificity	Recognizes endogenous levels of LXR alpha protein.
Antibody Type	Primary antibody
Immunogen	KLH-conjugated synthetic peptide encompassing a sequence within the center region of human LXR alpha. The exact sequence is proprietary.
Purification	The antibody was purified by immunogen affinity chromatography.
Molecular Weight	Predicted: 43; Observed: 50 kD
Form/Buffer	Liquid in 0.42% Potassium phosphate, 0.87% Sodium chloride, pH 7.3, 30% glycerol, and 0.01% sodium azide.
Alternative Names	LXRA; Oxysterols receptor LXR-alpha; Liver X receptor alpha; Nuclear receptor subfamily 1 group H member 3
Gene Symbol	NR1H3
Entrez Gene	10062(Human); 22259(Mouse)
SwissProt	Q13133(Human); Q9Z0Y9(Mouse); Q62685(Rat)

\*AREX continuously optimizes our products. Webpage content may not reflect the latest updates. For inquiries, please contact [info@arexbio.com](mailto:info@arexbio.com) or your local distributor.

\*Clone Number, Reactivity, Source/Host and Clonality can be found in the product name and Key Features section above.

**DATASHEET****LXR alpha Rabbit Polyclonal Antibody**

CAT. NO. APA12096

**DATA**

Western blot analysis of LXR alpha expression in SHSY5Y (A), HEK293T (B), NIH3T3 (C), rat muscle (D) whole cell lysates. (Predicted band size: 43; 45; 50 kD; Observed band size: 50 kD)

**STORAGE**

Store at 4°C short term. For long term storage, store at -20°C, avoiding freeze/thaw cycles.

**NOTE**

For Research Use Only. Not for diagnostic, therapeutics, prophylactic or in vivo use.