

DATASHEET

FGF12 Rabbit Polyclonal Antibody

CAT. NO. APA12099

KEY FEATURES

Target	FGF12	Source / Host	Rabbit
Reactivity	Human, Mouse, Rat	Clonality	Polyclonal
Applications	WB	Conjugation	Unconjugated
Form / Buffer	Liquid in 0.42% Potassium phosphate, 0.87% Sodium chloride, pH 7.3, 30% glycerol, and 0.01% sodium azide.		Storage at -20°C

BACKGROUND

Involved in nervous system development and function. Involved in the positive regulation of voltage-gated sodium channel activity. Promotes neuronal excitability by elevating the voltage dependence of neuronal sodium channel SCN8A fast inactivation.

APPLICATION

To ensure optimal assay performance, AREX recommends conducting reagent titration tailored to each testing system for optimal detection results.

WB	1:500 - 1:1000
----	----------------

*Results are sample-specific. Please refer to your local assay conditions and test parameters for reference.

PRODUCT OVERVIEW

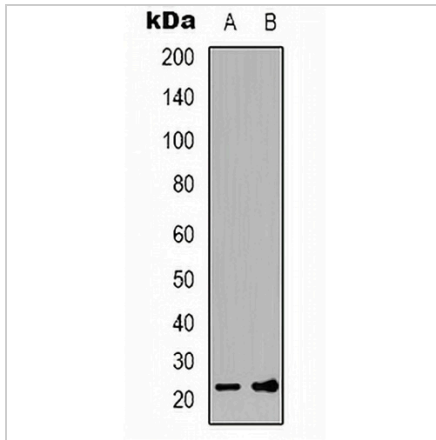
Description	Rabbit polyclonal antibody to FGF12
Specificity	Recognizes endogenous levels of FGF12 protein.
Antibody Type	Primary antibody
Immunogen	KLH-conjugated synthetic peptide encompassing a sequence within the center region of human FGF12. The exact sequence is proprietary.
Purification	The antibody was purified by immunogen affinity chromatography.
Molecular Weight	Predicted: 27 kD; Observed: 23 kD
Form/Buffer	Liquid in 0.42% Potassium phosphate, 0.87% Sodium chloride, pH 7.3, 30% glycerol, and 0.01% sodium azide.
Alternative Names	FGF12B; FHF1; Fibroblast growth factor 12; FGF-12; Fibroblast growth factor homologous factor 1; FHF-1; Myocyte-activating factor
Gene Symbol	FGF12
Entrez Gene	2257(Human); 14167(Mouse); 170630(Rat)
SwissProt	P61328(Human); P61329(Mouse); P61150(Rat)

*AREX continuously optimizes our products. Webpage content may not reflect the latest updates. For inquiries, please contact info@arexbio.com or your local distributor.

*Clone Number, Reactivity, Source/Host and Clonality can be found in the product name and Key Features section above.

DATASHEET**FGF12 Rabbit Polyclonal Antibody**

CAT. NO. APA12099

DATA

Western blot analysis of FGF12 expression in HeLa (A), SHSY5Y (B) whole cell lysates. (Predicted band size: 27 kD; Observed band size: 23 kD)

STORAGE

Store at 4°C short term. For long term storage, store at -20°C, avoiding freeze/thaw cycles.

NOTE

For Research Use Only. Not for diagnostic, therapeutics, prophylactic or in vivo use.