

**DATASHEET**

**Apelin Rabbit Polyclonal Antibody**

CAT. NO. APA12103

**KEY FEATURES**

Target	Apelin	Source / Host	Rabbit
Reactivity	Human, Mouse, Rat, Bovine	Clonality	Polyclonal
Applications	WB	Conjugation	Unconjugated
Form / Buffer	Liquid in 0.42% Potassium phosphate, 0.87% Sodium chloride, pH 7.3, 30% glycerol, and 0.01% sodium azide.		Storage at -20°C

**BACKGROUND**

Peptide hormone that functions as endogenous ligand for the G-protein-coupled apelin receptor (APLNR/APJ), that plays a role in cardiovascular homeostasis, that plays a role in cardiovascular homeostasis. Functions as a balanced agonist activating both G(i) protein pathway and beta-arrestin pathway of APLNR. Downstream G proteins activation, apelin can inhibit cAMP production and activate key intracellular effectors such as ERKs. On the other hand, APLNR activation induces beta-arrestin recruitment to the membrane leading to desensitization and internalization of the receptor. Apelin blunts cardiac hypertrophic induction from APLNR on response to pathological stimuli, but also induces myocardial hypertrophy under normal conditions.

**APPLICATION**

To ensure optimal assay performance, AREX recommends conducting reagent titration tailored to each testing system for optimal detection results.

WB	1:500 - 1:1000
----	----------------

\*Results are sample-specific. Please refer to your local assay conditions and test parameters for reference.

**PRODUCT OVERVIEW**

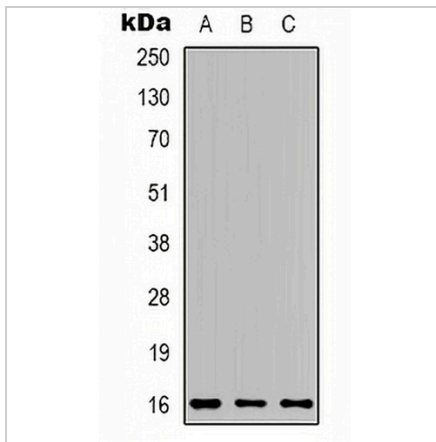
Description	Rabbit polyclonal antibody to Apelin
Specificity	Recognizes endogenous levels of Apelin protein.
Antibody Type	Primary antibody
Immunogen	KLH-conjugated synthetic peptide encompassing a sequence within the C-term region of human Apelin. The exact sequence is proprietary.
Purification	The antibody was purified by immunogen affinity chromatography.
Molecular Weight	Predicted: 8 kD; Observed: 16 kD
Form/Buffer	Liquid in 0.42% Potassium phosphate, 0.87% Sodium chloride, pH 7.3, 30% glycerol, and 0.01% sodium azide.
Alternative Names	APEL; Apelin; APJ endogenous ligand
Gene Symbol	APLN
Entrez Gene	8862(Human); 30878(Mouse); 58812(Rat)
SwissProt	Q9ULZ1(Human); Q9R0R4(Mouse); Q9R0R3(Rat)

\*AREX continuously optimizes our products. Webpage content may not reflect the latest updates. For inquiries, please contact [info@arexbio.com](mailto:info@arexbio.com) or your local distributor.

\*Clone Number, Reactivity, Source/Host and Clonality can be found in the product name and Key Features section above.

**DATASHEET****Apelin Rabbit Polyclonal Antibody**

CAT. NO. APA12103

**DATA**

Western blot analysis of Apelin expression in 22RV1 (A), MCF7 (B), mouse brain (C) whole cell lysates. (Predicted band size: 8 kD; Observed band size: 16 kD)

**STORAGE**

Store at 4°C short term. For long term storage, store at -20°C, avoiding freeze/thaw cycles.

**NOTE**

For Research Use Only. Not for diagnostic, therapeutics, prophylactic or in vivo use.