

**DATASHEET**

**CCL11 Rabbit Polyclonal Antibody**

CAT. NO. APA12119

**KEY FEATURES**

Target	CCL11	Source / Host	Rabbit
Reactivity	Human, Mouse	Clonality	Polyclonal
Applications	WB	Conjugation	Unconjugated
Form / Buffer	Liquid in 0.42% Potassium phosphate, 0.87% Sodium chloride, pH 7.3, 30% glycerol, and 0.01% sodium azide.		Storage at-20°C

**BACKGROUND**

Chemokine that plays a central role in both allergic and non-allergic inflammatory reactions by inducing the migration of different leukocyte types including eosinophils, basophils, macrophages and dendritic cells . Exerts its effects primarily by binding to the CCR3 receptor . Induces also chemotaxis of endothelial cells and promotes angiogenesis by activating the PI3K/Akt pathway .

**APPLICATION**

To ensure optimal assay performance, AREX recommends conducting reagent titration tailored to each testing system for optimal detection results.

WB	1:500 - 1:1000
----	----------------

\*Results are sample-specific. Please refer to your local assay conditions and test parameters for reference.

**PRODUCT OVERVIEW**

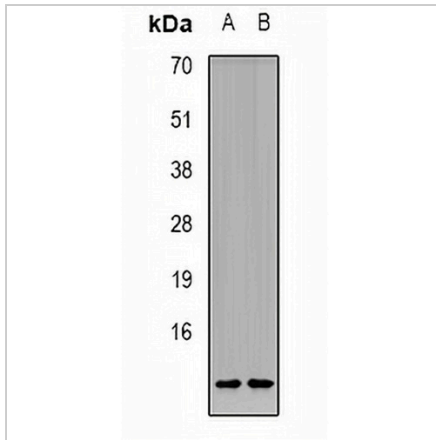
Description	Rabbit polyclonal antibody to CCL11
Specificity	Recognizes endogenous levels of CCL11 protein.
Antibody Type	Primary antibody
Immunogen	KLH-conjugated synthetic peptide encompassing a sequence within the center region of human CCL11. The exact sequence is proprietary.
Purification	The antibody was purified by immunogen affinity chromatography.
Molecular Weight	Predicted: 10 kD; Observed: 11 kD
Form/Buffer	Liquid in 0.42% Potassium phosphate, 0.87% Sodium chloride, pH 7.3, 30% glycerol, and 0.01% sodium azide.
Alternative Names	SCYA11; Eotaxin; C-C motif chemokine 11; Eosinophil chemotactic protein; Small-inducible cytokine A11
Gene Symbol	CCL11
Entrez Gene	6356(Human); 20292(Mouse)
SwissProt	P51671(Human); P48298(Mouse)

\*AREX continuously optimizes our products. Webpage content may not reflect the latest updates. For inquiries, please contact [info@arexbio.com](mailto:info@arexbio.com) or your local distributor.

\*Clone Number, Reactivity, Source/Host and Clonality can be found in the product name and Key Features section above.

**DATASHEET****CCL11 Rabbit Polyclonal Antibody**

CAT. NO. APA12119

**DATA**

Western blot analysis of CCL11 expression in HepG2 (A), mouse muscle (B) whole cell lysates. (Predicted band size: 10 kD; Observed band size: 11 kD)

**STORAGE**

Store at 4°C short term. For long term storage, store at -20°C, avoiding freeze/thaw cycles.

**NOTE**

For Research Use Only. Not for diagnostic, therapeutics, prophylactic or in vivo use.